



## Associations between abdominal adipose tissue, reproductive span, and brain characteristics in post-menopausal women

Louise S. Schindler<sup>a,b,\*</sup>, Sivaniya Subramaniapillai<sup>a,b</sup>, Claudia Barth<sup>c,d</sup>, Dennis van der Meer<sup>c,e</sup>, Mads L. Pedersen<sup>b,c</sup>, Tobias Kaufmann<sup>c,f</sup>, Ivan I. Maximov<sup>c,g</sup>, Jennifer Linge<sup>h,i</sup>, Olof Dahlqvist Leinhard<sup>h,i,j</sup>, Dani Beck<sup>b,c</sup>, Tiril P. Gurholt<sup>c</sup>, Irene Voldsbekk<sup>b,c</sup>, Sana Suri<sup>k,l</sup>, Klaus P. Ebmeier<sup>k</sup>, Bogdan Draganski<sup>a,m</sup>, Ole A. Andreassen<sup>c,n</sup>, Lars T. Westlye<sup>b,c,n</sup>, Ann-Marie G. de Lange<sup>a,b,k,\*</sup>

<sup>a</sup> LREN, Centre for Research in Neurosciences, Department of Clinical Neurosciences, Lausanne University Hospital (CHUV) and University of Lausanne, Lausanne, Switzerland

<sup>b</sup> Department of Psychology, University of Oslo, Oslo, Norway

<sup>c</sup> NORMENT, Division of Mental Health and Addiction, Oslo University Hospital & Institute of Clinical Medicine, University of Oslo, Oslo, Norway

<sup>d</sup> Department of Psychiatric Research, Diakonhjemmet Hospital, Oslo, Norway

<sup>e</sup> School of Mental Health and Neuroscience, Faculty of Health Medicine and Life Sciences, Maastricht University, The Netherlands

<sup>f</sup> Department of Psychiatry and Psychotherapy, University of Tübingen, Germany

<sup>g</sup> Department of Health and Functioning, Western Norway University of Applied Sciences, Bergen, Norway

<sup>h</sup> AMRA Medical AB, Linköping, Sweden

<sup>i</sup> Department of Health, Medicine, and Caring Sciences, Linköping University, Linköping, Sweden

<sup>j</sup> Center for Medical Image Science and Visualization (CMIV), Linköping University, Linköping, Sweden

<sup>k</sup> Department of Psychiatry, University of Oxford, Oxford, UK

<sup>l</sup> Wellcome Centre for Integrative Neuroimaging, University of Oxford, Oxford, UK

<sup>m</sup> Dept. of Neurology, Max Planck Institute for Human Cognitive and Brain Sciences, Leipzig, Germany

<sup>n</sup> KG Jebsen Centre for Neurodevelopmental Disorders, University of Oslo, Oslo, Norway

### ARTICLE INFO

#### Keywords:

Brain age  
White matter hyperintensities  
Adipose tissue  
Cardiometabolic health  
Body MRI  
Menopause  
Reproductive span  
Polygenic scores  
UK Biobank

### ABSTRACT

The menopause transition involves changes in oestrogens and adipose tissue distribution, which may influence female brain health post-menopause. Although increased central fat accumulation is linked to risk of cardiometabolic diseases, adipose tissue also serves as the primary biosynthesis site of oestrogens post-menopause. It is unclear whether different types of adipose tissue play diverging roles in female brain health post-menopause, and whether this depends on lifetime oestrogen exposure, which can have lasting effects on the brain and body even after menopause. Using the UK Biobank sample, we investigated associations between brain characteristics and visceral adipose tissue (VAT) and abdominal subcutaneous adipose tissue (ASAT) in 10,251 post-menopausal females, and assessed whether the relationships varied depending on length of reproductive span (age at menarche to age at menopause). To parse the effects of common genetic variation, we computed polygenic scores for reproductive span. The results showed that higher VAT and ASAT were both associated with higher grey and white matter brain age, and greater white matter hyperintensity load. The associations varied positively with reproductive span, indicating more prominent associations between adipose tissue and brain measures in females with a longer reproductive span. The effects were in general small, but could not be fully explained by genetic variation or relevant confounders. Our findings indicate that associations between abdominal adipose tissue and brain health post-menopause may partly depend on individual differences in cumulative oestrogen exposure during reproductive years, emphasising the complexity of neural and endocrine ageing processes in females.

\* Corresponding authors at: LREN, Centre for Research in Neurosciences, Department of Clinical Neurosciences, Lausanne University Hospital (CHUV) and University of Lausanne, Lausanne, Switzerland.

E-mail address: [louise.schindler@chuv.ch](mailto:louise.schindler@chuv.ch) (L.S. Schindler).

<https://doi.org/10.1016/j.nicl.2022.103239>

Received 26 July 2022; Received in revised form 6 October 2022; Accepted 17 October 2022

Available online 26 October 2022

2213-1582/© 2022 The Author(s). Published by Elsevier Inc. This is an open access article under the CC BY license (<http://creativecommons.org/licenses/by/4.0/>).

## 1. Introduction

The menopause transition is characterised by decreased circulating oestradiol levels and the cessation of menstrual cycles, marking the end of the reproductive phase (Hall, 2015; Jett et al., 2022; Marlatt et al., 2022). Although many individuals transition through menopause without long-term health issues, this life phase involves higher risk of obesity (Khouday et al., 2015; Leeners et al., 2017; Lovejoy et al., 2008; Lizcano and Guzmán, 2014) and cardiometabolic diseases (Carr, 2003; Janssen et al., 2008; Pu et al., 2017), which may contribute to the observed post-menopausal risk for neurodegeneration and dementia (Brinton et al., 2015; Jett et al., 2022; Rahman et al., 2019).

The relationships between oestrogen exposure, body composition, and brain health in females are complex and largely unexplored. The menopause transition is linked to an accelerated increase of central fat accumulation (Lizcano and Guzmán, 2014), and abdominal adipose tissue has been associated with higher grey matter (GM) and white matter (WM) brain age (Beck et al., 2022; Beck et al., 2021b; Subramaniapillai et al., 2022), WM hyperintensities (WMH) (Arnoldussen et al., 2019; Han et al., 2021; Lampe et al., 2019; Pasha et al., 2017; Park et al., 2018; Vuorinen et al., 2014), and dementia risk (Kiliaan et al., 2014; Tang et al., 2021; Razay et al., 2006; Whitmer et al., 2008). However, in females, adipose tissue also serves as the primary biosynthesis site of oestrogens post-menopause (Steiner and Berry, 2022; Bhardwaj et al., 2019; Kershaw and Flier, 2004; Siiteri, 1987; Simpson, 2003). Since oestradiol is consistently found to exert neuroprotective effects on the pre-menopausal female brain across preclinical and clinical studies (Azcoitia et al., 2019; Barth et al., 2016; Galea et al., 2017; Jacobs and Goldstein, 2018; Merlo et al., 2017; Scott et al., 2012; Zárate et al., 2017), changes in adipose tissue distribution could also involve mechanisms that foster a protective source of oestrogens after menopause (Klosinski et al., 2015; Subramaniapillai et al., 2022). Although the oestrogen levels produced via adipose tissue do not fully compensate for the loss of ovarian oestrogen production (Steiner and Berry, 2022), it is possible that different types of adipose tissue may play diverging roles in female brain health post-menopause.

Studies utilising magnetic resonance imaging (MRI) of the body, which allows for more precise measures of fat distribution than conventional anthropomorphic methods (Borga et al., 2018), demonstrate that visceral adipose tissue (VAT; the fat surrounding the abdominal organs) increases more following menopause than abdominal subcutaneous adipose tissue (ASAT; the fat below the skin) (Lee et al., 2009; Leeners et al., 2017; Lovejoy et al., 2008; Samargandy et al., 2021). Consistent evidence shows that higher midlife VAT in both males and females is associated with lower cortical and total brain volume (Debette et al., 2010; Isaac et al., 2011; Veit et al., 2014), higher WMH load (Anand et al., 2022; Kim et al., 2017; Pasha et al., 2017), and accelerated brain ageing (Zsido et al., 2019), while some studies indicate that ASAT may be significantly less detrimental or even protective for brain volume (Debette et al., 2010; Isaac et al., 2011; Widya et al., 2015; Qi et al., 2021) and WMH load (Kim et al., 2017; Yamashiro et al., 2014), especially in females (Nam et al., 2019). Although midlife adipose tissue levels relate to brain health in both males and females, the known menopause-related changes in body composition (Lizcano and Guzmán, 2014) highlight the need for targeted research into VAT, ASAT, and brain characteristics in post-menopausal females, which have not been examined previously.

In females, levels of oestrogen exposure pre-menopause may influence both brain health and body composition post-menopause, emphasising the complex interactions between neuroendocrine and metabolic processes across the female lifespan. For example, levels of cumulative oestrogen exposure, often assessed by reproductive span (age at menarche to age at menopause; (Fu et al., 2022; Gilsanz et al., 2019; Jett et al., 2022), have been linked to larger GM volumes (Schelbaum et al., 2021), lower WM brain age (Subramaniapillai et al., 2022), and lower dementia risk in older-age samples (Fox et al., 2013;

Gilsanz et al., 2019; Gong et al., 2022), although contrasting results have linked a longer reproductive span to increased risk of Alzheimer's disease (Najar et al., 2020; Geerlings et al., 2001). Age at menarche and menopause are also known to have genetic components (Fernández-Rhodes et al., 2018; Wang et al., 2019; Ruth et al., 2021), but it is unclear how the genetics underlying reproductive span relate to body composition and brain structure (Roa-Díaz et al., 2021). A later age at natural menopause has also been associated with lower risk for post-menopausal abdominal obesity (Zsakai et al., 2015), smaller post-menopausal increase of BMI (Montazeri et al., 2019), and decreased risk for cardiometabolic diseases (Muka et al., 2016; Roa-Díaz et al., 2021; Yang et al., 2017). However, the relationship between these are likely to be bidirectional, as pre-menopausal body composition can influence the timing of natural menopause (Dorjgochoo et al., 2008; Roa-Díaz et al., 2021; Tao et al., 2015; Zhu et al., 2019). Although increasing evidence points to greater lifetime exposure to oestrogens as beneficial for neural and cardiometabolic health, the mechanisms of these long-lasting actions of oestrogens are poorly understood. It is also unclear how cumulative oestrogen exposure during reproductive years interacts with adipose tissue and its post-menopausal oestrogen production to influence brain health at later life stages.

In this study, we investigated associations between different types of abdominal adipose tissue and brain characteristics in 10,251 post-menopausal females, and assessed whether the relationships varied depending on length of reproductive span (age at menarche to age at menopause). Measures of VAT and ASAT were extracted based on body MRI (Linge et al., 2018), and GM- and WM-specific brain age estimates were generated using T1- and diffusion-weighted MRI (dMRI) data, respectively (Voldsbekk et al., 2021). Brain age prediction has emerged as a useful tool for combining a rich variety of brain characteristics into single estimates per individual, providing a reliable proxy of brain integrity and health (Franke et al., 2010; Cole et al., 2019; Beck et al., 2021). Based on recent studies suggesting that tissue-specific age prediction can provide further detail (Beck et al., 2022; De Lange et al., 2020a; Eavani et al., 2018; Voldsbekk et al., 2021), we estimated GM and WM brain age separately. WMH volume derived from T2 fluid-attenuated inversion recovery (FLAIR) images was examined as an additional measure, as a number of studies indicate higher WMH prevalence in females compared to males (Alqarni et al., 2021; Jorgensen et al., 2018; Lohner et al., 2022; Sachdev et al., 2009; Than et al., 2021; Van Den Heuvel et al., 2004) and recent evidence points to sex-specific associations between cardiometabolic risk factors and WMH pathology (Alqarni et al., 2021). Sex differences in WMH prevalence have been observed to primarily emerge after the age of 50 (Wen et al., 2009), which is close to the average age of menopause (51 years, (InterLACE, 2019)), or specifically after the menopause (Jorgensen et al., 2018; Lohner et al., 2022; Than et al., 2021), indicating a link between WMHs and female endocrine ageing processes (Thurston et al., 2016). We used Bayesian linear models to assess relationships between the brain measures and VAT and ASAT, and included interaction terms to test if associations varied depending on reproductive span. To parse the effects of common genetic variation, we also tested for associations between the brain measures and polygenic scores (PGS) for the phenotype reproductive span.

We hypothesised that i) greater levels of abdominal adipose tissue, particularly VAT, would be associated with higher brain age and WMH load, ii) a shorter reproductive span would be associated with higher brain age and WMH load, and iii) the associations between abdominal adipose tissue and brain measures would vary depending on reproductive span, possibly reflecting a protective effect of adipose tissue in females with a shorter reproductive span.

## 2. Methods and materials

### 2.1. Sample characteristics

The sample was drawn from the UK Biobank cohort ([www.ukbiobank.ac.uk](http://www.ukbiobank.ac.uk)), and included 20,540 female participants with both T1- and diffusion-weighted MRI data. To ensure a neurologically healthy sample, 1,759 participants with disorders known to affect the brain, including stroke, dementia, and neurodegenerative and psychiatric disorders, were excluded based on ICD10 diagnoses in line with earlier work (Voldsbekk et al., 2021; de Lange et al., 2020) (details are provided in the UK Biobank online resources: <http://biobank.ndph.ox.ac.uk/showcase/field.cgi?id=41270>). In addition, 160 participants were excluded based on poor-quality MRI data likely due to motion (see Section 2.2), yielding a total of 18,621 participants with T1- and diffusion-weighted MRI data. Out of these, 16,542 participants had data entries across demographic factors, WMH volume, ASAT, VAT, age at menopause, age at menarche, hysterectomy, and bilateral oophorectomy. After removing missing values (NaN, 'prefer not to answer', 'do not know'), 11,381 were included in the subsequent analyses (missing data = 271 for demographic factors, 629 for WMH volume, 4,329 for age at menopause/menarche, and 1,806 for hysterectomy/oophorectomy, with some participants having missing values across several variables). Participants who had undergone a hysterectomy and/or oophorectomy were excluded (N = 1,010) in order to focus on variation in natural menopause. To avoid outlier-driven results, participants with age at menarche <9 and >17 and age at menopause <39 and >63 were excluded (N = 120, see Section 2.5), yielding a final sample of 10,251. As a cross-check, we also conducted the analyses including all ages at menarche/menopause as well as participants with hysterectomy and/or oophorectomy. Sample demographics are provided in Table 1.

### 2.2. MRI data acquisition and processing

Information about the UK Biobank data acquisition protocols is available in (Alfaro-Almagro et al., 2018 and Miller et al., 2016). Raw T1-weighted MRI data were processed using a harmonised analysis pipeline, including the FreeSurfer (version 5.3) automated surface-based morphometry and subcortical segmentation (Fischl et al., 2002). In line with recent brain age studies (Kaufmann et al., 2019; de Lange et al., 2019; Voldsbekk et al., 2021), we used the standard set of subcortical and cortical summary statistics from FreeSurfer (Fischl et al., 2002), as well as a fine-grained cortical parcellation scheme (Glasser et al., 2016), to extract cortical thickness, area, and volume for 180 regions of interest per hemisphere. This yielded a total set of 1,118 structural brain imaging features (360/360/360 for cortical thickness/area/volume respectively, and 38 for cerebellar/subcortical and cortical summary statistics). All 1,118 features were used as input features in the GM-specific age prediction model (Section 2.3). The brain morphometric data obtained from FreeSurfer were residualised with respect to scanning site and intracranial volume using linear models. To remove poor-quality MRI data likely due to motion, participants with Euler numbers (Rosen et al., 2018)  $\pm 4$  standard deviations from the mean were excluded (N = 160).

The dMRI data were processed using an optimised diffusion pipeline as described in detail in (Maximov et al., 2019). Metrics derived from diffusion tensor imaging (DTI) (Basser et al., 1994), diffusion kurtosis imaging (DKI) (Jensen et al., 2005), WM tract integrity (WMTI) (Fieremans et al., 2011), and spherical mean technique (SMT) (Kaden et al., 2016; Kaden et al., 2016) were used as input features in the WM-specific age prediction model (Section 2.3), as described in Voldsbekk et al., 2021. The metrics for each diffusion model are listed in Supplementary Information (SI) Section 1. For each metric, WM features were extracted based on John Hopkins University (JHU) atlases for white matter tracts and labels (with 0 thresholding) (Mori et al., 2005), including global mean values and regional measures (Voldsbekk et al., 2021; Beck et al., 2021). The dMRI data were residualised with respect

**Table 1**

Sample demographics. Percentage in each group for ethnic background, education, and assessment location. Mean  $\pm$  standard deviation (SD) and ranges for age, visceral adipose tissue (VAT), abdominal subcutaneous adipose tissue (ASAT), reproductive span, age at menarche, and age at menopause. GCSE = General Certificate of Secondary Education, NVQ = National Vocational Qualification.

| Sample N                  |                               | 10,251           |
|---------------------------|-------------------------------|------------------|
| Age                       | Mean $\pm$ SD                 | 63.99 $\pm$ 6.63 |
|                           | Range [years]                 | 48.09–81.49      |
| Ethnic background         | % White                       | 97.55            |
|                           | % Black                       | 0.52             |
|                           | % Mixed                       | 0.42             |
|                           | % Asian                       | 0.65             |
|                           | % Chinese                     | 0.34             |
|                           | % Other                       | 0.52             |
| Education                 | % University/college degree   | 47.25            |
|                           | % A levels or equivalent      | 14.52            |
|                           | % O levels/GCSE or equivalent | 20.26            |
|                           | % NVQ or equivalent           | 6.96             |
|                           | % Professional qualification  | 5.62             |
|                           | % None of the above           | 5.39             |
|                           | Assessment location           | % Newcastle      |
| % Cheadle                 |                               | 58.94            |
| % Reading                 |                               | 13.81            |
| VAT                       | Mean $\pm$ SD                 | 0.95 $\pm$ 0.54  |
|                           | Range                         | 0.04–4.11        |
| ASAT                      | Mean $\pm$ SD                 | 2.90 $\pm$ 1.24  |
|                           | Range                         | 0.19–9.60        |
| Reproductive span [years] | Mean $\pm$ SD                 | 37.95 $\pm$ 4.28 |
|                           | Range                         | 23–51            |
| Age at menarche [years]   | Mean $\pm$ SD                 | 12.99 $\pm$ 1.50 |
|                           | Range                         | 9–17             |
| Age at menopause [years]  | Mean $\pm$ SD                 | 50.94 $\pm$ 4.02 |
|                           | Range                         | 39–63            |

to scanning site using linear models, and passed tract-based spatial statistics (TBSS) post-processing quality control using the YTRIUM algorithm (Maximov et al., 2021).

Total volume of WMH was derived for each participant based on T2 FLAIR images in combination with T1-weighted data (<https://biobank.ndph.ox.ac.uk/showcase/field.cgi?id=25781>) using the Brain Intensity Abnormality Classification Algorithm (BIANCA) (Griffanti et al., 2016), which is part of the FMRIB Software Library FSL (Jenkinson et al., 2012). BIANCA is a fully automated tool for segmentation of WMH based on the k-nearest neighbour algorithm, and is documented as a reliable method for WMH segmentation in large cross-sectional cohort studies (Griffanti et al., 2016). The WMH volume measures were log transformed to normalise and stabilise the variance (Veldsman et al., 2020; Wartolowska and Webb, 2021). WMH volume was examined separately, as we were specifically interested in this measure due to the known female prevalence and links to oestradiol levels and adipose tissue. Hence, this feature was not included in the WM brain age estimate.

### 2.3. Brain age prediction

GM- and WM-specific age prediction models were run using the

XGBoost regression algorithm (*eXtreme Gradient Boosting*; <https://github.com/dmlc/xgboost>). XGBoost includes advanced regularisation to reduce overfitting, and has shown superior performance in machine learning competitions (Chen and Guestrin, 2016). Parameters were tuned in a nested cross-validation using 5 inner folds for randomised search, and 10 outer folds for model validation (see [https://github.com/amdelange/brainage\\_women/blob/main/python/run\\_prediction\\_model.py](https://github.com/amdelange/brainage_women/blob/main/python/run_prediction_model.py) for general model setup). Brain age gap (BAG) values were calculated by subtracting chronological age from predicted brain age, providing an estimate of each participant's brain age relative to their chronological age (Cole and Franke, 2017). To ensure that any associations with the variables of interest were not driven by age-dependence in the predictions (Liang et al., 2019; Smith et al., 2019), chronological age was included as a covariate in all subsequent analyses (de Lange and Cole, 2020; Le et al., 2018).

#### 2.4. Abdominal adipose tissue measures

Abdominal adipose tissue measures derived from body MRI were processed by AMRA medical, and accessed via UK Biobank Returned Datasets (Return ID 3666; <https://biobank.ndph.ox.ac.uk/ukb/app.cgi?id=6569>). The extracted measures included VAT volume, measured within the abdominal cavity, and ASAT volume, measured from the top of the femoral head to the top of the thoracic vertebrae T9, both measured in litres and divided by height squared.

#### 2.5. Reproductive span

To calculate reproductive span (age at menopause – age at menarche), we first removed extreme outliers for age at menarche and age at menopause in the sample used for the PGS (see Section 2.6), using median absolute deviation (Leys et al., 2013) with a threshold of 4. The same cut-offs were used in the MRI sample, resulting in a mean reproductive span of 37.95 years  $\pm$  4.28 (SD) in the final sample (see Section 2.1 for ages of menarche/menopause removed, and Section 2.8 for cross-checks including all ages at menarche/menopause).

#### 2.6. PGS calculations

A genome-wide association study (GWAS) was run on the UK Biobank female cohort (N = 121,620, excluding the MRI sample), using PLINK 2.0 (Chang et al., 2015) with the default additive model, making use of the UK Biobank v3 imputed genetic data, filtering out single nucleotide polymorphisms (SNPs) with a minor allele frequency below 0.001 or failing the Hardy–Weinberg equilibrium test at  $p < 1.00 \times 10^{-9}$ . Individuals with known brain disorders as indicated by ICD10 diagnoses (see Section 2.1), previous hysterectomy, and/or oophorectomy, and non-white Europeans were excluded. Linear regressions were run on the variable reproductive span, covarying for age and the first 20 genetic principal components (<https://biobank.ndph.ox.ac.uk/showcas/e/field.cgi?id=22009>). PRSice v2 (Choi and O'Reilly, 2019; Euesden et al., 2015) was used to calculate PGS of reproductive span at a p-value threshold of 0.05 for each European individual in the MRI subsample, using PRSice default settings. This includes the removal of the major histocompatibility complex (MHC) (chromosome 6, 26 to 33 Mb) and thinning of SNPs based on linkage disequilibrium and p-value.

#### 2.7. Statistical analyses

In line with guidelines for reporting Bayesian analyses (Sung et al., 2005; Kruschke, 2021), we list the statistical software used, define our priors, describe the statistical models used, and quote the results using central tendencies (mean, median, mode) and credible intervals. To test for associations between the brain measures and adipose tissue (VAT and ASAT) and their interaction with reproductive span, we ran

Bayesian multiple linear models using the Bayesian Model-Building Interface (Bambi) package (Capretto et al., 2022) in Python 3.7.6 (<https://pypi.org/project/bambi>). All variables were standardised (subtracting the mean and dividing by the standard deviation) prior to analyses. Four chains, with 2000 samples each, were estimated. In the sampling process, the first 1000 samples served as burn-ins to identify the region of best-fitting values in the parameter space. Weakly informative normal priors with  $\mu = 0$  and  $\sigma = 2.5$  were generated for all model terms by loosely scaling them to the standardised data (Bambi default) (Capretto et al., 2022). The model results for each association are described by the mean and the 95% highest density interval (HDI) of its posterior distributions. The mean represents the central tendency of the association, while there is a 95% probability that the true value lies within the HDI (see e.g. Hespagnol et al., 2019). Median and mode central tendencies are also provided.

Models were run with VAT and ASAT separately due to high correlation between the variables ( $r = 0.77$ ). The models included brain measure (GM BAG, WM BAG, or WMH vol) as the dependent variable, adipose tissue volume (VAT or ASAT)  $\times$  reproductive span as independent variables, and age as a covariate:

$$\text{Brain measure} \sim \text{adipose tissue volume} \times \text{reproductive span} + \text{age}. \quad (1)$$

To test for effects of common genetic variation, we calculated the phenotypic variance explained by the reproductive span PGS, tested for main effects of PGS on the brain measures, and re-ran the main analyses including the PGS as a covariate.

#### 2.8. Sensitivity analyses

To account for potential confounding factors that could influence brain structure, adipose tissue levels, and/or reproductive span, the models were rerun with the following covariates (in addition to age): health factors including diabetes status (Cole, 2020; Peters et al., 2014), hypertension (Fuchs and Whelton, 2020; Newby et al., 2022) and a lifestyle score which was computed by adding one point per unhealthy lifestyle factor (physical activity level, intake of fruits, vegetables, oily fish and red meats, sleep duration, television viewing time, current and past smoking status, and alcohol use) (Foster et al., 2018), female-specific factors including number of previous childbirths (de Lange et al., 2019), hormone replacement therapy use (user versus never user) (Hogervorst et al., 2000; Maki et al., 2011), and oral contraceptive use (user versus never user) (De Bondt et al., 2013), and socioeconomic factors including educational level (Fotinos et al., 2008; Meng and D'arcy, 2012; Walhovd et al., 2022) and ethnic background (Goff, 2019). We first included all covariates in one model, and then in three separate models including i) the health factors, ii) the female-specific factors, and iii) the socioeconomic factors, to test for specific influences of these potential covariates on the results. Furthermore, we repeated the analyses excluding subjects with a BMI  $>40$  (N excluded = 117), as these values may indicate morbid obesity and risk for serious health complications (Jarolimova et al., 2013). To account for potential uncertainties related to self-reporting of age at menarche decades later (Cooper et al., 2006; Must et al., 2002), the models were also conducted using age at menopause instead of reproductive span. Finally, we repeated the analyses without excluding any participants with outlier values for ages at menarche/menopause or hysterectomy and/or oophorectomy.

### 3. Results

#### 3.1. Associations with GM/WM BAG and WMH volume

Table 2 shows the age prediction accuracy of the GM- and WM-based models, respectively.

Fig. 1 and Table 3 show the associations of the brain measures with VAT, ASAT, reproductive span, and the interaction terms (see Eq. 1), as



**Table 2**

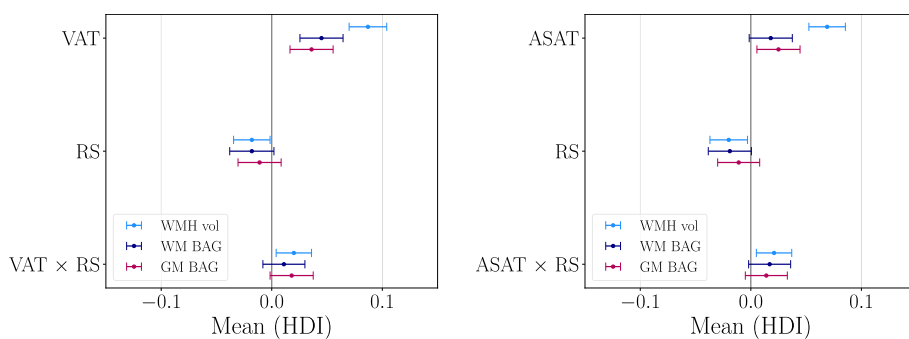
Age prediction accuracy for the models based on grey matter (GM) and white matter (WM) features, respectively. Model accuracy is measured by  $R^2$  (proportion of variance in age explained), root mean square error (RMSE), mean absolute error (MAE), and Pearson's correlations ( $r$ ) between predicted and chronological age.  $R^2$ , RMSE, and MAE are averaged across folds, providing the mean  $\pm$  standard error of each performance measure. CI = confidence interval.

| Model | $R^2$            | RMSE             | MAE              | $r$ [95% CI]       | $p$       |
|-------|------------------|------------------|------------------|--------------------|-----------|
| GM    | $0.53 \pm 0.015$ | $5.02 \pm 0.069$ | $3.99 \pm 0.074$ | $0.73[0.72, 0.74]$ | $<0.0001$ |
| WM    | $0.60 \pm 0.021$ | $4.65 \pm 0.089$ | $3.74 \pm 0.086$ | $0.77[0.77, 0.78]$ | $<0.0001$ |

described by the mean and the 95% HDI of their posterior distributions. Table 3 also includes mode and median values, which were highly similar to the means across associations. SI Fig. 1 shows the posterior distributions from the model including VAT, RS, and GM BAG for illustration. Higher VAT and ASAT were associated with higher BAG (i.e., older brain age relative to chronological age) and higher WMH volume. A shorter reproductive span was related to higher GM/WM BAG and WMH volume. This is indicative of a negative relationship between reproductive span and the brain measures, but the results are not fully conclusive as the upper HDIs approach or overlap with zero (see Table 3). As a cross-check, we measured the main effects of ASAT, VAT, and reproductive span on the brain measures in separate models that did not include the interaction term. The associations were consistent, as shown in SI Fig. 2. The relationships between VAT and ASAT and the brain measures varied positively with reproductive span based on the HDI mean values, such that longer reproductive spans and higher VAT and ASAT were associated with higher BAG and WMH load. However, these interactions are not fully conclusive as the lower HDIs approach or overlap with zero (see Table 3). To illustrate the interaction effects, Fig. 2 shows the VAT and ASAT associations with the brain measures in bins of reproductive span length. Fig. 3 shows the correlations between VAT and ASAT, reproductive span, and the brain measures.

**3.2. Reproductive span PGS**

To measure the phenotypic variance explained by the reproductive span PGS, we ran a linear regression for PGS and reproductive span in years to calculate  $R^2$ , adjusting for age (Choi et al., 2020). The adjusted  $R^2$  value was 0.045, with a  $\beta$  value of  $0.05 \pm 0.003$  (standard error) for the PGS, as shown in Fig. 4. The PGS scores showed no associations with the brain measures (SI Fig. 3), and the correlations of RS PGS with VAT and ASAT were  $r = -0.02$  and  $-0.01$ , respectively (see SI Fig. 4 for correlation matrix). The associations between VAT and ASAT, reproductive span, and the brain measures persisted when partialling out polygenic scores, as shown in SI Fig. 5 and SI Table 1.



**Fig. 1.** Associations between visceral adipose tissue (VAT), abdominal subcutaneous adipose tissue (ASAT), reproductive span (RS) and brain measures. The points show the means of the posterior distributions for the associations, with error bars indicating the 95% highest density intervals (HDI). Higher VAT and ASAT were associated with higher GM/WM BAG and WMH volume. Shorter RS was associated with higher GM/WM BAG and WMH volume, and the relationships between VAT and ASAT and the brain measures varied positively with RS as indicated by the interaction terms. As the HDIs for the RS associations and interactions approach or overlap with zero, these results are not fully conclusive. GM = grey matter, WM = white matter, BAG = brain age gap, WMH vol = white matter hyperintensity volume.

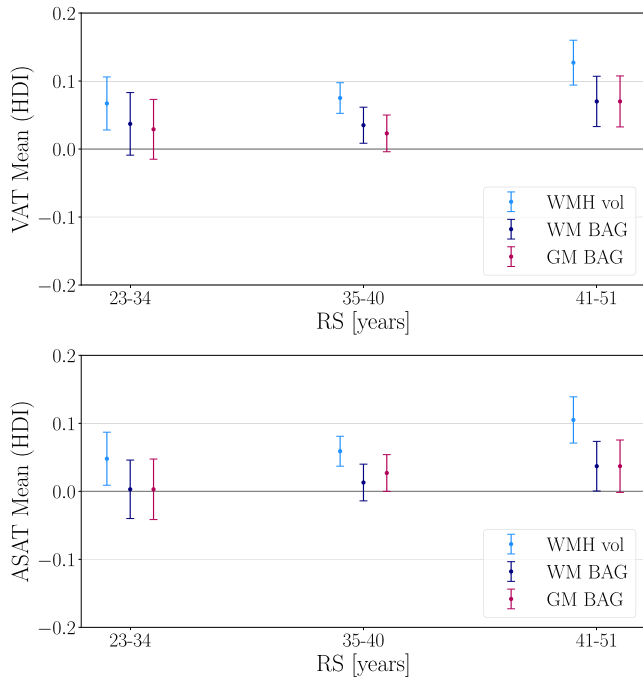
**3.3. Sensitivity analyses**

The sensitivity analyses showed that when including the additional covariates specified in Section 2.8 in a single model, the associations showed a pattern consistent with the main results, but with minor shifts towards zero for the main effects of both adipose tissue types and reproductive span on brain measures. The three separate covariate models (SI Fig. 7) showed that the positive associations between adipose tissue and the brain measures were slightly weaker when including the health factors (diabetes, hypertension, and the lifestyle score), and the negative associations between reproductive span and the brain measures were slightly weaker when including the female-specific factors (number of previous childbirths, hormone replacement therapy use and oral

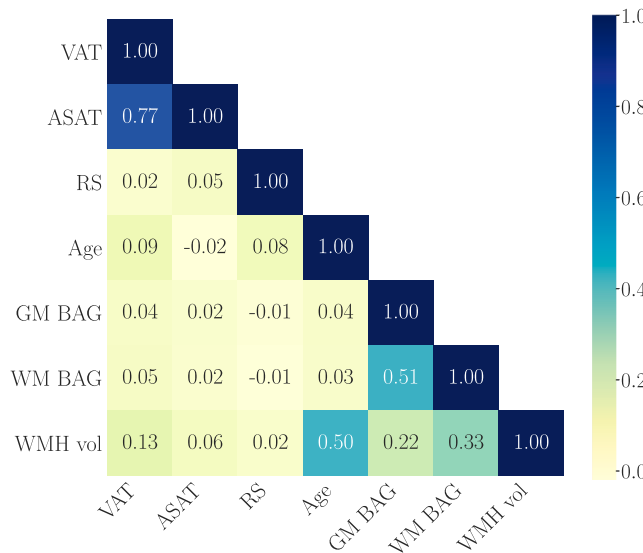
**Table 3**

Means and highest density intervals (HDIs) of the posterior distributions for each Bayesian regression model, in addition to mode and median values for each association. VAT = visceral adipose tissue, ASAT = abdominal subcutaneous adipose tissue, RS = reproductive span, GM = grey matter, WM = white matter, BAG = brain age gap, WMH vol = white matter hyperintensity volume.

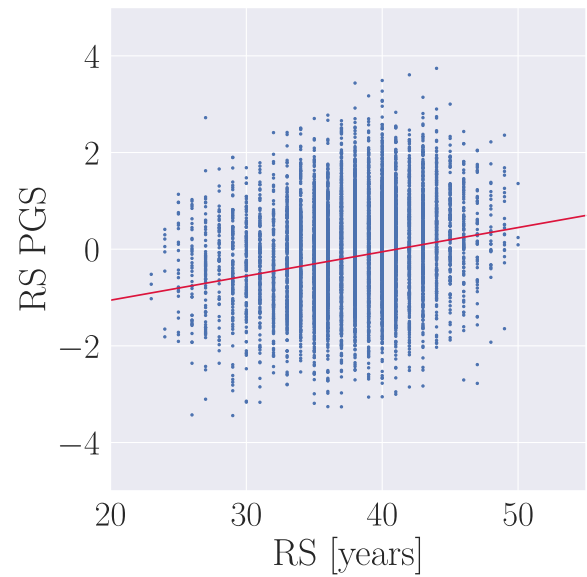
| Brain measures | Term             | Mean   | Mode   | Median | HDI 2.5% | HDI 97.5% |
|----------------|------------------|--------|--------|--------|----------|-----------|
| GM BAG         | VAT              | 0.036  | 0.036  | 0.036  | 0.017    | 0.056     |
|                | RS               | -0.011 | -0.013 | -0.011 | -0.032   | 0.007     |
|                | VAT $\times$ RS  | 0.018  | 0.018  | 0.018  | -0.002   | 0.037     |
| WM BAG         | VAT              | 0.045  | 0.044  | 0.045  | 0.025    | 0.064     |
|                | RS               | -0.018 | -0.017 | -0.018 | -0.038   | 0.002     |
|                | VAT $\times$ RS  | 0.011  | 0.012  | 0.012  | -0.008   | 0.030     |
| WMH vol        | VAT              | 0.087  | 0.086  | 0.087  | 0.071    | 0.105     |
|                | RS               | -0.018 | -0.017 | -0.018 | -0.033   | 0.000     |
|                | VAT $\times$ RS  | 0.020  | 0.020  | 0.020  | 0.004    | 0.036     |
| GM BAG         | ASAT             | 0.025  | 0.022  | 0.025  | 0.005    | 0.044     |
|                | RS               | -0.011 | -0.012 | -0.011 | -0.030   | 0.008     |
|                | ASAT $\times$ RS | 0.014  | 0.015  | 0.014  | -0.005   | 0.033     |
| WM BAG         | ASAT             | 0.018  | 0.019  | 0.018  | -0.003   | 0.036     |
|                | RS               | -0.019 | -0.018 | -0.018 | -0.038   | 0.001     |
|                | ASAT $\times$ RS | 0.017  | 0.016  | 0.017  | -0.002   | 0.036     |
| WMH vol        | ASAT             | 0.069  | 0.069  | 0.069  | 0.053    | 0.086     |
|                | RS               | -0.020 | -0.018 | -0.019 | -0.036   | -0.002    |
|                | ASAT $\times$ RS | 0.021  | 0.021  | 0.021  | 0.005    | 0.037     |



**Fig. 2.** Associations between visceral adipose tissue (VAT) and abdominal subcutaneous adipose tissue (ASAT) and brain measures, estimated in bins of reproductive span (RS) to illustrate the interaction effects observed in Fig. 1. In females with a longer RS, higher VAT and ASAT was slightly more positively associated with GM/WM BAG and WMH vol than in subjects with a shorter RS. Note that the continuous RS variable was used in the analyses (Eq. 1), and the bins are created only to visualise the direction of the interaction. The points show the means of the posterior distributions for the associations, with error bars indicating the 95% highest density intervals (HDI). The mean  $\pm$  SD for RS was  $37.95 \pm 4.28$  years, with bins including 1,914, 5,564, and 2,772 participants with a RS between 23–34, 35–40, and 41–51 years, respectively. VAT = visceral adipose tissue, ASAT = abdominal subcutaneous adipose tissue, GM = grey matter, WM = white matter, BAG = brain age gap, WMH vol = white matter hyperintensity volume.



**Fig. 3.** Correlations between visceral adipose tissue (VAT), abdominal subcutaneous adipose tissue (ASAT), reproductive span (RS), age, grey matter (GM) and white matter (WM) brain age gap (BAG), and white matter hyperintensity volume (WMH vol).



**Fig. 4.** Reproductive span in years (x-axis) versus polygenic score (PGS) for reproductive span (y-axis), based on a linear regression adjusting for age. The adjusted  $R^2$  value was 0.045, with a  $\beta$  (slope) value of  $0.05 \pm 0.003$  (standard error).

contraceptive use). When including only the socioeconomic factors (ethnic background and educational level), the associations were highly consistent with the main results. The results remained consistent with the main results when excluding subjects with a BMI above 40 (SI Fig. 8), when repeating the models using age at menopause instead of reproductive span (SI Fig. 9), and when including all ages at menarche/menopause as well as participants with hysterectomy and/or oophorectomy (SI Fig. 10).

#### 4. Discussion

This study examined the associations between different types of abdominal adipose tissue (VAT and ASAT), reproductive span, and brain characteristics (GM/WM BAG and WMH volume) in a large sample of post-menopausal females. In summary, greater VAT and ASAT were both associated with higher GM/WM BAG (older brain age relative to chronological age) and higher WMH volume. Based on the HDI mean values, a shorter reproductive span was related to higher GM/WM BAG and WMH volume, and the associations between abdominal adipose tissue and brain measures varied positively with reproductive span, potentially indicating more prominent associations in females with greater levels of lifetime oestrogen exposure. The effects were in general small, but could not be fully explained by genetic variation or relevant confounders, and further studies are needed to draw conclusions.

The associations between abdominal adipose tissue and brain characteristics are consistent with previous studies linking elevated adipose tissue to older brain age (Beck et al., 2022; Subramaniapillai et al., 2022), lower brain volume (Cho et al., 2021; Debetto and Markus, 2010; Gurholt et al., 2021; Isaac et al., 2011; Veit et al., 2014), and higher WMH load (Arnoldussen et al., 2019; Lampe et al., 2019; Park et al., 2018; Vuorinen et al., 2014). The relationships were more prominent for WMH volume compared to GM and WM BAG (about 3 standard deviations higher, see Fig. 1), indicating that the WMH volume measures from FLAIR images may represent a particularly sensitive measure. Although WMH are likely to also influence WM diffusion measures (Raghavan et al., 2021), this finding may suggest an increased risk for white matter lesions in post-menopausal females with elevated abdominal adipose tissue. Inflammation has been proposed as a key factor linking central adiposity and WMH load (Lampe et al., 2019), and

weight gain during the menopause transition involves a heightened inflammatory state (Lee et al., 2009; McCarthy and Raval, 2020). Inflammation linked to changes in hormone levels and body composition may thus be a mechanistic explanation for the higher risk of WMH in post-menopausal females (Fatemi et al., 2018; Sachdev et al., 2009; Than et al., 2022; Wen et al., 2009). However, the relationship between changes in adipose tissue and WM lesions within the shorter perimenopausal time window remains to be investigated.

The associations with brain characteristics showed similar patterns for the two abdominal adipose tissue types (see Fig. 1). Although VAT and ASAT may have distinct anatomical, cellular, molecular, physiological, clinical, and prognostic correlates (Ibrahim, 2010; Kwok et al., 2016), the high correlation between them ( $> 0.7$ ) in the current study indicates that these measures shared a relatively large degree of overlapping information. However, other studies have specifically linked midlife VAT to more adverse effects on brain structure compared to ASAT (Debette et al., 2010; Isaac et al., 2011; Widya et al., 2015; Qi et al., 2021). One possible explanation for this arises from a biopsy study, which showed changes in adipose tissue phenotypes across the menopause transition (Abildgaard et al., 2021). Specifically, these changes were linked to metabolic dysfunction in both VAT and ASAT post-menopause (Abildgaard et al., 2021), which could potentially contribute to detrimental effects of both tissue types on brain structure. However, longitudinal studies assessing changes in adipose tissue phenotype and brain health across the menopause transition and beyond are needed to draw causal conclusions.

Although adipose tissue is the primary biosynthesis site of oestrogens post-menopause (Bhardwaj et al., 2019), we found no direct evidence towards neuroprotective effects of certain adipose tissue types. We did however observe that the associations of VAT and ASAT with the brain measures were more prominent in females with a longer reproductive span. Although these results were not fully conclusive (see Section 3.1), this finding could indicate that a combination of higher levels of adipose tissue and greater exposure to oestrogens may constitute a risk of adverse brain health (see e.g. Brinton, 2005; Brinton, 2008). Alternatively, these findings could indicate that with earlier decline of ovarian hormone production, higher levels of adipose tissue may be less detrimental due to beneficial oestrogen production via adipose tissue. However, it is unclear how individual variation in oestrogen exposure pre-menopause may influence associations between adipose tissue and brain health post-menopause, and how this may relate to circulating oestrogen levels, which were not available at the time of the brain and body MRI scans. Although oestradiol measures were available from baseline in a smaller subsample, it can take several years for oestradiol levels to stabilise following menopause (Randolph Jr et al., 2011), and these measurements may be influenced by certain types of hormone replacement therapy (Waaseth et al., 2008) as well as lifestyle factors (Wiggs et al., 2021). Due to the time window between assessments, changes in both oestradiol and adipose tissue levels could occur, limiting any firm conclusions based on these measures. Future studies should target both current and previous oestrogen levels to clarify the links between adipose tissue, oestrogen exposure, and brain characteristics, and ideally measure how changes in hormones and body fat link to brain health across the menopause transition.

Our results further indicated associations between a shorter reproductive span and higher GM/WM BAG and WMH volume independent of abdominal adipose tissue levels. Although these effects were not fully conclusive, the directions of the associations align with previous studies showing beneficial effects of a longer reproductive span on a number of brain health markers (Georgakis et al., 2016; Schelbaum et al., 2021; Subramaniapillai et al., 2022; Zeydan et al., 2019) and dementia risk (Gong et al., 2022). In line with previous studies (Day et al., 2015, 2017; Zhao et al., 2021) we found an association between polygenic and phenotypic variance in reproductive span, but we found no notable associations between PGS, adipose tissue measures and brain measures, nor did PGS alter the interactions when included as a covariate. This

suggests that the observed associations may be driven by factors such as oestrogen exposure rather than common genetic variation. While it is plausible that longer-term exposure to oestrogens pre-menopause may have lasting effects on brain health beyond the menopause transition (Schelbaum et al., 2021), the observed effects were small, which may explain why other studies have found no association between reproductive span length and brain characteristics (Prince et al., 2022). Proxies of lifetime oestrogen exposure also vary across studies (de Lange et al., 2020; Fox et al., 2013; Zhao et al., 2021), and factors such as duration of hormone replacement/contraceptive use and time spent breastfeeding are likely to influence cumulative oestrogen exposure across the female lifespan (Barth and de Lange, 2020). When including available covariates (hormone replacement therapy and oral contraceptive use, and previous pregnancies), we observed these to slightly moderate the associations between reproductive span and the brain measures, indicating that a range of female-specific factors relate to brain health in line with previous studies (Gong et al., 2022; de Lange et al., 2019).

Whether brain characteristics are influenced by higher abdominal adipose tissue generally or by its typical increase during the menopause transition is unclear. For example, a longitudinal study found that it was the change in BMI over a 20-year period spanning from pre- to post-menopause that predicted GM volume in 48 females (Soreca et al., 2009). Recent studies also point towards a biphasic association between BMI and dementia (Kivimäki et al., 2018; Pedditizi et al., 2016). For example, while midlife obesity predicts risk for dementia (Albanese et al., 2017; Floud et al., 2020; Pedditizi et al., 2016), the prevalence of dementia has been found to be higher in underweight than in normal weight or overweight females (Dong et al., 2022). Prodromal stages of neurodegenerative diseases can involve weight loss as a result of disrupted brain function and dietary changes (Floud et al., 2020; Gu et al., 2014), and longitudinal studies targeting early markers of neurodegeneration may further the understanding of changes in body weight, brain health, and dementia risk in females.

Also yet to be elucidated are the mechanisms underlying the associations between adipose tissue, oestrogen exposure, and brain characteristics, which are likely multifactorial and interactive. Factors such as elevated inflammatory markers have been associated with increased adipose tissue levels (Aguilar-Valles et al., 2015; Miller and Spencer, 2014), even specifically during the menopause transition (Lee et al., 2009), as well as decreasing oestrogens (McCarthy and Raval, 2020), brain atrophy (Luo et al., 2022), and dementia risk (Heneka et al., 2015; Ransohoff, 2016). Biological markers of obesity, such as lipid profile (Anstey et al., 2017; Reitz, 2012), glucose (Crane et al., 2013), HbA1c (Ramirez et al., 2015), leptin (Zeki Al Hazzouri et al., 2013), and Vitamin B12 (Lauer et al., 2022), may also influence associations between adipose tissue and brain health, and contribute to risk of comorbidities such as type II diabetes and hypertension, which are known to impact neural and cardiometabolic health (Cole, 2020; Fuchs and Whelton, 2020; Newby et al., 2022; Peters et al., 2014).

Importantly, sex differences have been observed for the aetiology and progression of cardiometabolic risk factors (Gerdtts and Regitz-Zagrosek, 2019; Yoshida et al., 2022) and their relation to the brain (Alqarni et al., 2021; Subramaniapillai et al., 2021; Subramaniapillai et al., 2022; Than et al., 2022), illustrating the critical need for sex-specific studies (Miller and Spencer, 2014; Shansky and Murphy, 2021; Taylor et al., 2019). Further research is necessary to understand the complex interplay of mechanisms that contribute to risk for cardiometabolic and neurodegenerative diseases in post-menopausal females (Christensen and Pike, 2015), and how preventive measures such as physical exercise and hormone replacement therapy can be optimised to moderate risk.

In conclusion, our findings indicate that higher levels of both visceral and abdominal subcutaneous adipose tissue are associated with higher brain age and WMH volume in post-menopausal females. These associations may partly depend on individual differences in cumulative

oestrogen exposure, and future studies should aim to disentangle the complex relationships between oestrogen exposure, adipose tissue, and brain health both across the menopause transition and beyond. As the menopause transition involves an accelerated increase of central fat accumulation, further research into mechanisms and risks is pertinent to facilitate preventive interventions that can reduce the risk of adverse brain health post-menopause.

## 5. Data availability statement

The data that support the findings of this study are available through the UK Biobank data access procedures (<https://www.ukbiobank.ac.uk/researchers>).

## CRedit authorship contribution statement

**Louise S. Schindler:** Conceptualization, Methodology, Formal analysis, Visualization, Writing – original draft. **Sivaniya Subramaniapillai:** Conceptualization, Methodology, Writing – review & editing. **Claudia Barth:** Methodology, Writing – review & editing. **Dennis van der Meer:** Methodology, Formal analysis, Writing – review & editing. **Mads L. Pedersen:** Methodology, Visualization, Writing – review & editing. **Tobias Kaufmann:** Methodology, Writing – review & editing. **Ivan I. Maximov:** Writing – review & editing. **Jennifer Linge:** Methodology, Writing – review & editing. **Olof Dahlqvist Leinhard:** Methodology, Writing – review & editing. **Dani Beck:** Writing – review & editing. **Tiril P. Gurholt:** Writing – review & editing. **Irene Voldsbekk:** Writing – review & editing. **Sana Suri:** Writing – review & editing. **Klaus P. Ebmeier:** Writing – review & editing, Project administration. **Bogdan Draganski:** Writing – review & editing, Project administration. **Ole A. Andreassen:** Writing – review & editing, Project administration. **Lars T. Westlye:** Methodology, Writing – review & editing, Project administration. **Ann-Marie G. de Lange:** Conceptualization, Methodology, Formal analysis, Visualization, Writing – original draft, Project administration.

## Acknowledgements

This research has been conducted using the UK Biobank data under Application 27412. UK Biobank has received ethics approval from the National Health Service National Research Ethics Service (ref 11/NW/0382). The work was performed on the Service for Sensitive Data (TSD) platform, owned by the University of Oslo, operated and developed by the TSD service group at the University of Oslo IT-Department (USIT). Computations were also performed using resources provided by UNINETT Sigma2 - the National Infrastructure for High Performance Computing and Data Storage in Norway. While working on this study, the authors received funding from the Swiss National Science Foundation (PZ00P3\_193658; NCCR Synapsy, project grants Nr 32003B\_135679, 32003B\_159780, 324730\_192755, and CRSK-3\_190185), the Leenaards Foundation, the Natural Sciences and Engineering Research Council of Canada, the Research Council of Norway (276082, 323961, 273345, 249795, 298646, 300768, 250358, 223273, 283799, 283798), the South-Eastern Norway Regional Health Authority (2018076, 2019101, 2017112, 2022080), the European Research Council under the European Union's Horizon 2020 research and innovation programme (802998, 732592, 847776), the HDH Wills 1965 Charitable Trust (1117747), the Alzheimer's Society (Grant Ref 441), and the Academy of Medical Sciences/the Wellcome Trust/the Government Department of Business, Energy and Industrial Strategy/the British Heart Foundation/Diabetes UK Springboard Award (SBF006/1078). The Wellcome Centre for Integrative Neuroimaging is supported by core funding from the Wellcome Trust (203139/Z/16/Z).

## Appendix A. Supplementary data

Supplementary data associated with this article can be found, in the online version, at <https://doi.org/10.1016/j.nicl.2022.103239>.

## References

- Abildgaard, J., Ploug, T., Al-Saoudi, E., Wagner, T., Thomsen, C., Ewertsen, C., Bzorek, M., Pedersen, B.K., Pedersen, A.T., Lindegaard, B., 2021. Changes in abdominal subcutaneous adipose tissue phenotype following menopause is associated with increased visceral fat mass. *Sci. Rep.* 11, 14750.
- Aguilar-Valles, A., Inoue, W., Rummel, C., Luheshi, G.N., 2015. Obesity, adipokines and neuroinflammation. *Neuropharmacology* 96, 124–134.
- Albanese, E., Launer, L.J., Egger, M., Prince, M.J., Giannakopoulos, P., Wolters, F.J., Egan, K., 2017. Body mass index in midlife and dementia: Systematic review and meta-regression analysis of 589,649 men and women followed in longitudinal studies. *Alzheimers Dement (Amst.)* 8, 165–178.
- Alfaro-Almagro, F., Jenkinson, M., Bangerter, N.K., Andersson, J.L., Griffanti, L., Douaud, G., Sotiropoulos, S.N., Jbabdi, S., Hernandez-Fernandez, M., Vallee, E., et al., 2018. Image processing and quality control for the first 10,000 brain imaging datasets from uk biobank. *Neuroimage* 166, 400–424.
- Alqarni, A., Jiang, J., Crawford, J.D., Koch, F., Brodaty, H., Sachdev, P., Wen, W., 2021. Sex differences in risk factors for white matter hyperintensities in non-demented older individuals. *Neurobiol. Aging* 98, 197–204.
- Anand, S.S., Friedrich, M.G., Lee, D.S., Awadalla, P., Després, J.P., Desai, D., de Souza, R. J., Dummer, T., Parraga, G., Larose, E., Lear, S.A., 2022. Evaluation of Adiposity and Cognitive Function in Adults. *JAMA network open* 5 (2), e2146324.
- Anstey, K.J., Ashby-Mitchell, K., Peters, R., 2017. Updating the evidence on the association between serum cholesterol and risk of late-life dementia: review and meta-analysis. *J. Alzheimer's Disease* 56, 215–228.
- Arnoldussen, I.A., Gustafson, D.R., Leijsen, E.M., de Leeuw, F.-E., Kiliaan, A.J., 2019. Adiposity is related to cerebrovascular and brain volumetry outcomes in the run dmc study. *Neurology* 93, e864–e878.
- Azcoitia, I., Barreto, G.E., Garcia-Segura, L.M., 2019. Molecular mechanisms and cellular events involved in the neuroprotective actions of estradiol. Analysis of sex differences. *Front. Neuroendocrinol.* 55, 100787.
- Barth, C., de Lange, A.M.G., 2020. Towards an understanding of women's brain aging: the immunology of pregnancy and menopause. *Frontiers in Neuroendocrinology* 58, 100850.
- Barth, C., Steele, C.J., Mueller, K., Rekkas, V.P., Arélin, K., Pampel, A., Burmann, I., Kratzsch, J., Villringer, A., Sacher, J., 2016. In-vivo Dynamics of the Human Hippocampus across the Menstrual Cycle. *Sci. Rep.* 6, 32833.
- Basser, P.J., Mattiello, J., LeBihan, D., 1994. MR diffusion tensor spectroscopy and imaging. *Biophys. J.* 66, 259–267.
- Beck, D., De Lange, A.-M., Maximov, I.I., Richard, G., Andreassen, O.A., Nordvik, J.E., Westlye, L.T., 2021. White matter microstructure across the adult lifespan: A mixed longitudinal and cross-sectional study using advanced diffusion models and brain-age prediction. *NeuroImage* 224, 117441.
- Beck, D., de Lange, A.-M.G., Alnæs, D., Maximov, I.I., Pedersen, M.L., Leinhard, O.D., Linge, J., Simon, R., Richard, G., Ulrichsen, K.M., Dørum, E.S., Kolskår, K.K., Sanders, A.-M., Winterton, A., Gurholt, T.P., Kaufmann, T., Steen, N.E., Nordvik, J. E., Andreassen, O.A., Westlye, L.T., 2022. Adipose tissue distribution from body MRI is associated with cross-sectional and longitudinal brain age in adults. *NeuroImage: Clinical* 33, 102949.
- Beck, D., de Lange, A.M.G., Pedersen, M.L., Alnæs, D., Maximov, I.I., Voldsbekk, I., Richard, G., Sanders, A.M., Ulrichsen, K.M., Dørum, E.S., Kolskår, K.K., 2019. Cardiometabolic risk factors associated with brain age and accelerate brain ageing. *Human brain mapping* 43 (2), 700–720.
- Bhardwaj, P., Au, C.C., Benito-Martin, A., Ladumor, H., Oshchepkova, S., Moges, R., Brown, K.A., 2019. Estrogens and breast cancer: Mechanisms involved in obesity-related development, growth and progression. *J. Steroid Biochem. Mol. Biol.* 189, 161–170.
- Borga, M., West, J., Bell, J.D., Harvey, N.C., Romu, T., Heymsfield, S.B., Leinhard, O.D., 2018. Advanced body composition assessment: from body mass index to body composition profiling. *Journal of Investigative Medicine* 66 (5), 1–9.
- Brinton, R., Yao, J., Yin, F., Mack, W., Cadenas, E., 2015. Perimenopause as a neurological transition state. *Nature Rev. Endocrinol.* 11.
- Brinton, R.D., 2005. Investigative models for determining hormone therapy-induced outcomes in brain: evidence in support of a healthy cell bias of estrogen action. *Ann. N. Y. Acad. Sci.* 1052, 57–74.
- Brinton, R.D., 2008. The healthy cell bias of estrogen action: mitochondrial bioenergetics and neurological implications. *Trends Neurosci.* 31, 529–537.
- Capretto, T., Pihó, C., Kumar, R., Westfall, J., Yarkoni, T., Martin, 2022. Bambi: A Simple Interface for Fitting Bayesian Linear Models in Python. *Journal of Statistical Software* 15, 1–29.
- Carr, M.C., 2003. The Emergence of the Metabolic Syndrome with Menopause. *J. Clin. Endocrinol. Metab.* 88, 2404–2411.
- Chang, C.C., Chow, C.C., Tellier, L.C., Vattikuti, S., Purcell, S.M., Lee, J.J., 2015. Second-generation plink: rising to the challenge of larger and richer datasets. *Gigascience* 4, s13742–015.
- Chen, T., Guestrin, C., 2016. Xgboost: A scalable tree boosting system. In: *Proceedings of the 22nd acm sigkdd international conference on knowledge discovery and data mining*, pp. 785–794.



- Cho, J., Seo, S., Kim, W.-R., Kim, C., Noh, Y., 2021. Association Between Visceral Fat and Brain Cortical Thickness in the Elderly: A Neuroimaging Study. *Frontiers in Aging Neuroscience* 13.
- Choi, S.W., Mak, T.S.-H., O'Reilly, P.F., 2020. Tutorial: a guide to performing polygenic risk score analyses. *Nature Protocols* 15, 2759–2772.
- Choi, S.W., O'Reilly, P.F., 2019. Prsice-2: Polygenic risk score software for biobank-scale data. *Gigascience* 8, giz082.
- Christensen, A., Pike, C.J., 2015. Menopause, obesity and inflammation: interactive risk factors for alzheimer's disease. *Front. Aging Neurosci.* 7, 130.
- Cole, J.H., 2020. Multimodality neuroimaging brain-age in uk biobank: relationship to biomedical, lifestyle, and cognitive factors. *Neurobiol. Aging* 92, 34–42.
- Cole, J.H., Franke, K., 2017. Predicting age using neuroimaging: innovative brain ageing biomarkers. *Trends Neurosci.* 40, 681–690.
- Cole, J.H., Marioni, R.E., Harris, S.E., Deary, I.J., 2019. Brain age and other bodily 'ages': implications for neuropsychiatry. *Mol. Psychiatry* 24, 266–281.
- Cooper, R., Blell, M., Hardy, R., Black, S., Pollard, T., Wadsworth, M., Pearce, M., Kuh, D., 2006. Validity of age at menarche self-reported in adulthood. *J. Epidemiol. Commun. Health* 60, 993–997.
- Crane, P.K., Walker, R., Hubbard, R.A., Li, G., Nathan, D.M., Zheng, H., Haneuse, S., Craft, S., Montine, T.J., Kahn, S.E., et al., 2013. Glucose levels and risk of dementia. *N. Engl. J. Med.* 369, 540–548.
- Day, F.R., Ruth, K.S., Thompson, D.J., Lunetta, K.L., Pervjakova, N., Chasman, D.I., Stolk, L., Finucane, H.K., Sulem, P., Bulik-Sullivan, B., Esko, T., et al., 2015. Large-scale genomic analyses link reproductive aging to hypothalamic signaling, breast cancer susceptibility and BRCA1-mediated DNA repair. *Nature genetics* 47 (11), 1294–1303.
- Day, F.R., Thompson, D.J., Helgason, H., Chasman, D.I., Finucane, H., Sulem, P., Ruth, K.S., Whalen, S., Sarkar, A.K., Albrecht, E., et al., 2017. Genomic analyses identify hundreds of variants associated with age at menarche and support a role for puberty timing in cancer risk. *Nature Genet.* 49, 834–841.
- De Bondt, T., Jacquemyn, Y., Van Hecke, W., Sijbers, J., Sunaert, S., Parizel, P., 2013. Regional gray matter volume differences and sex-hormone correlations as a function of menstrual cycle phase and hormonal contraceptive use. *Brain Res.* 1530, 22–31.
- Debette, S., Beiser, A., Hoffmann, U., Decarli, C., O'Donnell, C.J., Massaro, J.M., Au, R., Himali, J.J., Wolf, P.A., Fox, C.S., Seshadri, S., 2010. Visceral fat is associated with lower brain volume in healthy middle-aged adults. *Ann. Neurol.* 68, 136–144.
- Debette, S., Markus, H.S., 2010. The clinical importance of white matter hyperintensities on brain magnetic resonance imaging: systematic review and meta-analysis. *BMJ* 341, c3666.
- Dong, C., Zhou, C., Fu, C., Hao, W., Ozaki, A., Shrestha, N., Virani, S.S., Mishra, S.R., Zhu, D., 2022. Sex differences in the association between cardiovascular diseases and dementia subtypes: a prospective analysis of 464,616 uk biobank participants. *Biol. Sex Differences* 13, 1–11.
- Dorjgochoo, T., Kallianpur, A., Gao, Y.-T., Cai, H., Yang, G., Li, H., Zheng, W., Shu, X.O., 2008. Dietary and lifestyle predictors of age at natural menopause and reproductive span in the shanghai women's health study. *Menopause (New York, NY)* 15, 924.
- Eavani, H., Habes, M., Satterthwaite, T.D., An, Y., Hsieh, M.-K., Honnorat, N., Erus, G., Doshi, J., Ferrucci, L., Beason-Held, L.L., et al., 2018. Heterogeneity of structural and functional imaging patterns of advanced brain aging revealed via machine learning methods. *Neurobiol. Aging* 71, 41–50.
- El Khoudary, S.R., Shields, K.J., Janssen, I., Hanley, C., Budoff, M.J., Barinas-Mitchell, E., Everson-Rose, S.A., Powell, L.H., Matthews, K.A., 2015. Cardiovascular Fat, Menopause, and Sex Hormones in Women: The SWAN Cardiovascular Fat Ancillary Study. *J. Clin. Endocrinol. Metab.* 100, 3304–3312.
- Euesden, J., Lewis, C.M., O'Reilly, P.F., 2015. Prsice: polygenic risk score software. *Bioinformatics* 31, 1466–1468.
- Fatemi, F., Kantarci, K., Graff-Radford, J., Preboske, G.M., Weigand, S.D., Przybelski, S.A., Knopman, D.S., Machulda, M.M., Roberts, R.O., Mielke, M.M., et al., 2018. Sex differences in cerebrovascular pathologies on flair in cognitively unimpaired elderly. *Neurology* 90, e466–e473.
- Fernández-Rhodes, L., Malinowski, J.R., Wang, Y., Tao, R., Pankratz, N., Jeff, J.M., Yoneyama, S., Carty, C.L., Setiawan, V.W., Le Marchand, Haiman, C., 2018. The genetic underpinnings of variation in ages at menarche and natural menopause among women from the multi-ethnic Population Architecture using Genomics and Epidemiology (PAGE) Study: A trans-ethnic meta-analysis. *PLoS one* 13 (7), e0200486.
- Fieremans, E., Jensen, J.H., Helpert, J.A., 2011. White matter characterization with diffusional kurtosis imaging. *Neuroimage* 58, 177–188.
- Fischl, B., Salat, D.H., Busa, E., Albert, M., Dieterich, M., Haselgrove, C., Van Der Kouwe, A., Killiany, R., Kennedy, D., Klaveness, S., et al., 2002. Whole brain segmentation: automated labeling of neuroanatomical structures in the human brain. *Neuron* 33, 341–355.
- Floud, S., Simpson, R.F., Balkwill, A., Brown, A., Goodill, A., Gallacher, J., Sudlow, C., Harris, P., Hofman, A., Parish, S., et al., 2020. Body mass index, diet, physical inactivity, and the incidence of dementia in 1 million uk women. *Neurology* 94, e123–e132.
- Foster, H.M., Celis-Morales, C.A., Nicholl, B.I., Petermann-Rocha, F., Pell, J.P., Gill, J.M., O'Donnell, C.A., Mair, F.S., 2018. The effect of socioeconomic deprivation on the association between an extended measurement of unhealthy lifestyle factors and health outcomes: a prospective analysis of the uk biobank cohort. *Lancet Public Health* 3, e576–e585.
- Fotinos, A.F., Mintun, M.A., Snyder, A.Z., Morris, J.C., Buckner, R.L., 2008. Brain volume decline in aging: evidence for a relation between socioeconomic status, preclinical alzheimer disease, and reserve. *Arch. Neurol.* 65, 113–120.
- Fox, M., Berzuini, C., Knapp, L.A., 2013. Cumulative estrogen exposure, number of menstrual cycles, and Alzheimer's risk in a cohort of British women. *Psychoneuroendocrinology* 38, 2973–2982.
- Franke, K., Ziegler, G., Klöppel, S., Gaser, C., Initiative, A.D.N., et al., 2010. Estimating the age of healthy subjects from t1-weighted mri scans using kernel methods: exploring the influence of various parameters. *Neuroimage* 50, 883–892.
- Fu, C., Hao, W., Shrestha, N., Virani, S.S., Mishra, S.R., Zhu, D., 2022. Association of reproductive factors with dementia: A systematic review and dose-response meta-analyses of observational studies. *eClinicalMedicine* 43, 101236.
- Fuchs, F.D., Whelton, P.K., 2020. High blood pressure and cardiovascular disease. *Hypertension* 75, 285–292.
- Galea, L.A., Frick, K.M., Hampson, E., Sohrabji, F., Choleris, E., 2017. Why estrogens matter for behavior and brain health. *Neurosci. Biobehav. Rev.* 76, 363–379.
- Geerlings, M.I., Ruitenberg, A., Witteman, J.C., van Swieten, J.C., Hofman, A., van Duijn, C.M., Breteler, M.M., Launer, L.J., 2001. Reproductive period and risk of dementia in postmenopausal women. *Jama* 285, 1475–1481.
- Georgakis, M.K., Kalogirou, E.I., Diamantaras, A.-A., Daskalopoulou, S.S., Munro, C.A., Lyketos, C.G., Skalkidou, A., Petridou, E.T., 2016. Age at menopause and duration of reproductive period in association with dementia and cognitive function: A systematic review and meta-analysis. *Psychoneuroendocrinology* 73, 224–243.
- Gerds, E., Regitz-Zagrosek, V., 2019. Sex differences in cardiometabolic disorders. *Nature Med.* 25, 1657–1666.
- Gilsanz, P., Lee, C., Corrada, M.M., Kawas, C.H., Quesenberry, C.P., Whitmer, R.A., 2019. Reproductive period and risk of dementia in a diverse cohort of health care members. *Neurology* 92, e2005–e2014.
- Glasser, M.F., Coalson, T.S., Robinson, E.C., Hacker, C.D., Harwell, J., Yacoub, E., Ugurbil, K., Andersson, J., Beckmann, C.F., Jenkinson, M., et al., 2016. A multi-modal parcellation of human cerebral cortex. *Nature* 536, 171.
- Goff, L.M., 2019. Ethnicity and type 2 diabetes in the uk. *Diabet. Med.* 36, 927–938.
- Gong, J., Harris, K., Peters, S.A.E., Woodward, M., 2022. Reproductive factors and the risk of incident dementia: A cohort study of UK Biobank participants. *PLoS Med.* 19, e1003955.
- Griffanti, L., Zamboni, G., Khan, A., Li, L., Bonifacio, G., Sundaresan, V., Schulz, U.G., Kuker, W., Battaglini, M., Rothwell, P.M., Jenkinson, M., 2016. BIANCA (Brain Intensity AbNormality Classification Algorithm): A new tool for automated segmentation of white matter hyperintensities. *NeuroImage* 141, 191–205.
- Gu, Y., Scarmeas, N., Cosentino, S., Brandt, J., Albert, M., Blacker, D., Dubois, B., Stern, Y., 2014. Change in body mass index before and after alzheimer's disease onset. *Curr. Alzheimer Res.* 11, 349–356.
- Gurholt, T.P., Kaufmann, T., Frei, O., Alnaes, D., Haukvik, U.K., van der Meer, D., Moberget, T., O'Connell, K.S., Leinhard, O.D., Linge, J., et al., 2021. Population-based body-brain mapping links brain morphology with anthropometrics and body composition. *Transl. Psychiatry* 11, 1–12.
- Hall, J.E., 2015. Endocrinology of the Menopause. *Endocrinol. Metab. Clin. North Am.* 44, 485–496.
- Han, Y.-P., Tang, X., Han, M., Yang, J., Cardoso, M.A., Zhou, J., Simo, R., 2021. Relationship between obesity and structural brain abnormality: Accumulated evidence from observational studies. *Ageing Res. Rev.* 71, 101445.
- Heneka, M.T., Carson, M.J., El Khoury, J., Landreth, G.E., Brosseron, F., Feinstein, D.L., Jacobs, A.H., Wyss-Coray, T., Vitorica, J., Ransohoff, R.M., et al., 2015. Neuroinflammation in alzheimer's disease. *Lancet Neurol.* 14, 388–405.
- Hespanhol, L., Vallio, C.S., Costa, L.M., Saragiotto, B.T., 2019. Understanding and interpreting confidence and credible intervals around effect estimates. *Braz. J. Phys. Therapy* 23, 290–301.
- Hogervorst, E., Williams, J., Budge, M., Riedel, W., Jolles, J., 2000. The nature of the effect of female gonadal hormone replacement therapy on cognitive function in postmenopausal women: a meta-analysis. *Neuroscience* 101, 485–512.
- Ibrahim, M.M., 2010. Subcutaneous and visceral adipose tissue: structural and functional differences. *Obesity Rev.* 11, 11–18.
- InterLACE Study Team, 2019. Variations in reproductive events across life: a pooled analysis of data from 505 147 women across 10 countries. *Hum. Reprod.* 34, 881–893.
- Isaac, V., Sim, S., Zheng, H., Zagorodnov, V., Tai, E.-S., Chee, M., 2011. Adverse Associations between Visceral Adiposity, Brain Structure, and Cognitive Performance in Healthy Elderly. *Front. Aging Neurosci.* 3.
- Jacobs, E.G., Goldstein, J.M., 2018. The middle-aged brain: biological sex and sex hormones shape memory circuitry. *Curr. Opin. Behav. Sci.* 23, 84–91.
- Janssen, I., Powell, L.H., Crawford, S., Lasley, B., Sutton-Tyrrell, K., 2008. Menopause and the Metabolic Syndrome: The Study of Women's Health Across the Nation. *Arch. Intern. Med.* 168, 1568–1575.
- Jarolimova, J., Tagoni, J., Stern, T.A., 2013. Obesity: its epidemiology, comorbidities, and management. *The primary care companion for CNS disorders* 15, 27045.
- Jenkinson, M., Beckmann, C.F., Behrens, T.E.J., Woolrich, M.W., Smith, S.M., 2012. FSL. *NeuroImage* 62, 782–790.
- Jensen, J.H., Helpert, J.A., Ramani, A., Lu, H., Kaczynski, K., 2005. Diffusional kurtosis imaging: the quantification of non-gaussian water diffusion by means of magnetic resonance imaging. *Magn. Resonance Med.: Official J. Int. Soc. Magn. Resonance Med.* 53, 1432–1440.
- Jett, S., Malviya, N., Schelbaum, E., Jang, G., Jahan, E., Clancy, K., Hristov, H., Pahlajani, S., Niotis, K., Loeb-Zeitlin, S., Havryliuk, Y., Isaacson, R., Brinton, R.D., Mosconi, L., 2022. Endogenous and Exogenous Estrogen Exposures: How Women's Reproductive Health Can Drive Brain Aging and Inform Alzheimer's Prevention. *Frontiers in Aging Neuroscience*, p. 14.
- Jorgensen, D.R., Shaaban, C.E., Wiley, C.A., Gianaros, P.J., Mettenberg, J., Rosano, C., 2018. A population neuroscience approach to the study of cerebral small vessel

- disease in midlife and late life: an invited review. *Am. J. Physiol.-Heart Circulat. Physiol.* 314, H1117–H1136.
- Kaden, E., Kelm, N.D., Carson, R.P., Does, M.D., Alexander, D.C., 2016. Multi-compartment microscopic diffusion imaging. *NeuroImage* 139, 346–359.
- Kaden, E., Kruggel, F., Alexander, D.C., 2016. Quantitative mapping of the per-axon diffusion coefficients in brain white matter. *Magn. Resonance Med.* 75, 1752–1763.
- Kaufmann, T., van der Meer, D., Doan, N.T., Schwarz, E., Lund, M.J., Agartz, I., Alnæs, D., Barch, D.M., Baur-Streubel, R., Bertolino, A., et al., 2019. Common brain disorders are associated with heritable patterns of apparent aging of the brain. *Nat. Neurosci.* 22, 1617–1623.
- Kershaw, E.E., Flier, J.S., 2004. Adipose Tissue as an Endocrine Organ. *J. Clin. Endocrinol. Metab.* 89, 2548–2556.
- Kiliaan, A.J., Arnoldussen, I.A., Gustafson, D.R., 2014. Adipokines: a link between obesity and dementia? *Lancet Neurol.* 13, 913–923.
- Kim, K.W., Seo, H., Kwak, M.-S., Kim, D., 2017. Visceral obesity is associated with white matter hyperintensity and lacunar infarct. *Int. J. Obes. (Lond.)* 41, 683–688.
- Kivimäki, M., Luukkonen, R., Batty, G.D., Ferrie, J.E., Pentti, J., Nyberg, S.T., Shipley, M. J., Alfredsson, L., Fransson, E.I., Goldberg, M., et al., 2018. Body mass index and risk of dementia: analysis of individual-level data from 1.3 million individuals. *Alzheimer's Dementia* 14, 601–609.
- Klosinski, L.P., Yao, J., Yin, F., Fonteh, A.N., Harrington, M.G., Christensen, T.A., Trushina, E., Brinton, R.D., 2015. White matter lipids as a ketogenic fuel supply in aging female brain: implications for alzheimer's disease. *EBioMedicine* 2, 1888–1904.
- Kruschke, J.K., 2021. Bayesian analysis reporting guidelines. *Nature Human Behaviour* 5, 1282–1291.
- Kwok, K.H., Lam, K.S., Xu, A., 2016. Heterogeneity of white adipose tissue: molecular basis and clinical implications. *Exp. Mol. Med.* 48, e215.
- Lampe, L., Zhang, R., Beyer, F., Huhn, S., Kharabian Masouleh, S., Preusser, S., Bazin, P.-L., Schroeter, M.L., Villringer, A., Witte, A.V., 2019. Visceral obesity relates to deep white matter hyperintensities via inflammation. *Ann. Neurol.* 85, 194–203.
- de Lange, A.M.G., Anatórk, M., Suri, S., Kaufmann, T., Cole, J.H., Griffanti, L., Zsoldos, E., Jensen, D.E., Filippini, N., Singh-Manoux, A., Kivimäki, M., 2020a. Multimodal brain-age prediction and cardiovascular risk: The Whitehall II MRI sub-study. *NeuroImage* 222, 117292.
- de Lange, A.-M.G., Barth, C., Kaufmann, T., Anatórk, M., Suri, S., Ebmeier, K.P., Westlye, L.T., 2020. The maternal brain: Region-specific patterns of brain aging are traceable decades after childbirth. *Human Brain Mapping*.
- de Lange, A.-M.G., Barth, C., Kaufmann, T., Maximov, I.I., van der Meer, D., Agartz, I., Westlye, L.T., 2020. Women's brain aging: Effects of sex-hormone exposure, pregnancies, and genetic risk for Alzheimer's disease. *Human Brain Mapping* 41 (18), 5141–5150.
- de Lange, A.-M.G., Cole, J.H., 2020. Commentary: Correction procedures in brain-age prediction. *NeuroImage: Clinical* 26.
- de Lange, A.-M.G., Kaufmann, T., van der Meer, D., Maglanoc, L.A., Alnæs, D., Moberget, T., Douaud, G., Andreassen, O.A., Westlye, L.T., 2019. Population-based neuroimaging reveals traces of childbirth in the maternal brain. *Proc. Natl. Acad. Sci. U.S.A.* 116, 22341–22346.
- Lauer, A.A., Grimm, H.S., Apel, B., Golobrodskaja, N., Kruse, L., Ratanski, E., Schulzen, N., Schwarze, L., Slawik, T., Sperlich, S., et al., 2022. Mechanistic link between vitamin b12 and alzheimer's disease. *Biomolecules* 12, 129.
- Le, T.T., Kuplicki, R.T., McKinney, B.A., Yeh, H.-W., Thompson, W.K., Paulus, M.P., Investigators, T., et al., 2018. A nonlinear simulation framework supports adjusting for age when analyzing brainage. *In: Front. Aging Neurosci.*, p. 10.
- Lee, C.G., Carr, M.C., Murdoch, S.J., Mitchell, E., Woods, N.F., Wener, M.H., Chandler, W.L., Boyko, E.J., Brunzell, J.D., 2009. Adipokines, Inflammation, and Visceral Adiposity across the Menopausal Transition: A Prospective Study. *J. Clin. Endocrinol. Metab.* 94, 1104–1110.
- Leeners, B., Geary, N., Tobler, P.N., Asarian, L., 2017. Ovarian hormones and obesity. *Human Reprod. Update* 23, 300–321.
- Leys, C., Ley, C., Klein, O., Bernard, P., Licata, L., 2013. Detecting outliers: Do not use standard deviation around the mean, use absolute deviation around the median. *J. Exp. Soc. Psychol.* 49, 764–766.
- Liang, H., Zhang, F., Niu, X., 2019. Investigating systematic bias in brain age estimation with application to post-traumatic stress disorders. *Human Brain Mapp.*
- Linge, J., Borga, M., West, J., Tuthill, T., Miller, M.R., Dumitriu, A., Thomas, E.L., Romu, T., Tunón, P., Bell, J.D., et al., 2018. Body composition profiling in the uk biobank imaging study. *Obesity* 26, 1785–1795.
- Lizcano, F., Guzmán, G., 2014. Estrogen Deficiency and the Origin of Obesity during Menopause. *Biomed. Res. Int.* 2014, 757461.
- Lohner, V., Pehlivan, G., Sanroma, G., Miloschewski, A., Schirmer, M.D., Stöcker, T., Reuter, M., Breteler, M.M., 2022. Relation between sex, menopause, and white matter hyperintensities: The rhineland study. *Neurology* 99, e935–e943.
- Lovejoy, J., Champagne, C., de Jonge, L., Xie, H., Smith, S., 2008. Increased visceral fat and decreased energy expenditure during the menopausal transition. *Int. J. Obes. (Lond.)* 32, 949–958.
- Luo, J., le Cessie, S., Blauw, G.J., Franceschi, C., Noordam, R., van Heemst, D., 2022. Systemic inflammatory markers in relation to cognitive function and measures of brain atrophy: a Mendelian randomization study. *GeroScience* 1–12.
- Maki, P.M., Dennerstein, L., Clark, M., Guthrie, J., LaMontagne, P., Fornelli, D., Little, D., Henderson, V.W., Resnick, S.M., 2011. Perimenopausal use of hormone therapy is associated with enhanced memory and hippocampal function later in life. *Brain Res.* 1379, 232–243.
- Marlatt, K.L., Pitynski-Miller, D.R., Gavin, K.M., Moreau, K.L., Melanson, E.L., Santoro, N., Kohrt, W.M., 2022. Body composition and cardiometabolic health across the menopause transition. *Obesity* 30, 14–27.
- Maximov, I.I., Alnaes, D., Westlye, L.T., 2019. Towards an optimised processing pipeline for diffusion magnetic resonance imaging data: Effects of artefact corrections on diffusion metrics and their age associations in UK biobank. *Hum. Brain Mapp.* 40, 4146–4162.
- Maximov, I.I., van der Meer, D., de Lange, A.-M.G., Kaufmann, T., Shadrin, A., Frei, O., Wolfers, T., Westlye, L.T., 2021. Fast quality control method for derived diffusion metrics (YTRIUM) in big data analysis: UK biobank 18,608 example. *Human Brain Mapp.* 42, 3141–3155.
- McCarthy, M., Raval, A.P., 2020. The peri-menopause in a woman's life: a systemic inflammatory phase that enables later neurodegenerative disease. *J. Neuroinflamm.* 17, 1–14.
- Meng, X., D'arcy, C., 2012. Education and dementia in the context of the cognitive reserve hypothesis: a systematic review with meta-analyses and qualitative analyses. *PLoS one* 7, e38268.
- Merlo, S., Spampinato, S.F., Sortino, M.A., 2017. Estrogen and Alzheimer's disease: Still an attractive topic despite disappointment from early clinical results. *Eur. J. Pharmacol.* 817, 51–58.
- Miller, A.A., Spencer, S.J., 2014. Obesity and neuroinflammation: a pathway to cognitive impairment. *Brain Behav. Immun.* 42, 10–21.
- Miller, K.L., Alfaro-Almagro, F., Bangerter, N.K., Thomas, D.L., Yacoub, E., Xu, J., Bartsch, A.J., Jbabdi, S., Sotiropoulos, S.N., Andersson, J.L., et al., 2016. Multimodal population brain imaging in the uk biobank prospective epidemiological study. *Nature Neurosci.* 19, 1523.
- Montazeri, S.A., Tehrani, F.R., Yarandi, R.B., Erfani, H., Mansournia, M.A., Azizi, F., 2019. Effect of aging, menopause, and age at natural menopause on the trend in body mass index: a 15-year population-based cohort. *Fertility Sterility* 111, 780–786.
- Mori, S., Wakana, S., Van Zijl, P.C., Nagae-Poetscher, L., 2005. MRI atlas of human white matter. Elsevier.
- Muka, T., Oliver-Williams, C., Kunutsor, S., Laven, J.S., Fauser, B.C., Chowdhury, R., Kavousi, M., Franco, O.H., 2016. Association of age at onset of menopause and time since onset of menopause with cardiovascular outcomes, intermediate vascular traits, and all-cause mortality: a systematic review and meta-analysis. *JAMA Cardiol.* 1, 767–776.
- Must, A., Phillips, S., Naumova, E., Blum, M., Harris, S., Dawson-Hughes, B., Rand, W., 2002. Recall of early menstrual history and menarcheal body size: after 30 years, how well do women remember? *Am. J. Epidemiol.* 155, 672–679.
- Najar, J., Östling, S., Waern, M., Zettergren, A., Kern, S., Wetterberg, H., Hällström, T., Skoog, I., 2020. Reproductive period and dementia: A 44-year longitudinal population study of Swedish women. *Alzheimer's Dementia* 16, 1153–1163.
- Nam, K.-W., Kwon, H., Kwon, H.-M., Park, J.-H., Jeong, H.-Y., Kim, S.H., Jeong, S.-M., Kim, H.J., Hwang, S.-S., 2019. Abdominal fatness and cerebral white matter hyperintensity. *J. Neurol. Sci.* 404, 52–57.
- Newby, D., Winchester, L., Sproviero, W., Fernandes, M., Ghose, U., Lyall, D., Launer, L. J., Nevado-Holgado, A.J., 2022. The relationship between isolated hypertension with brain volumes in UK Biobank. *Brain and behavior.*, e2525.
- Park, Y.C., Lee, T.S., Kang, H.-T., Cho, E.S., Kim, J.S., Hwang, Y.J., Kim, J.-K., 2018. Association Between Duration of Reproductive Years and Metabolic Syndrome. *J. Women's Health* 27, 271–277.
- Pasha, E.P., Birdsill, A., Parker, P., Elmenshawy, A., Tanaka, H., Haley, A.P., 2017. Visceral adiposity predicts subclinical white matter hyperintensities in middle-aged adults. *Obes. Res. Clin. Pract.* 11, 177–187.
- Pedditizi, E., Peters, R., Beckett, N., 2016. The risk of overweight/obesity in mid-life and late life for the development of dementia: a systematic review and meta-analysis of longitudinal studies. *Age Ageing* 45, 14–21.
- Peters, S.A., Huxley, R.R., Woodward, M., 2014. Diabetes as risk factor for incident coronary heart disease in women compared with men: a systematic review and meta-analysis of 64 cohorts including 858,507 individuals and 28,203 coronary events. *Diabetologia* 57, 1542–1551.
- Prince, C., Sharp, G.C., Howe, L.D., Fraser, A., Richmond, R.C., 2022. The relationships between women's reproductive factors: a Mendelian randomisation analysis. *BMC Med.* 20, 103.
- Pu, D., Tan, R., Yu, Q., Wu, J., 2017. Metabolic syndrome in menopause and associated factors: a meta-analysis. *Climacteric* 20, 583–591.
- Qi, Y., Lin, M., Yang, Y., Li, Y., 2021. Relationship of visceral adipose tissue with dilated perivascular spaces. *Front. Neurosci.* 14, 583557.
- Raghavan, S., Reid, R.I., Przybelski, S.A., Lesnick, T.G., Graff-Radford, J., Schwarz, C.G., Knopman, D.S., Mielke, M.M., Machulda, M.M., Petersen, R.C., et al., 2021. Diffusion models reveal white matter microstructural changes with ageing, pathology and cognition. *Brain Commun.* 3, fcab106.
- Rahman, A., Jackson, H., Hristov, H., Isaacson, R.S., Saif, N., Shetty, T., Etingin, O., Henchcliffe, C., Brinton, R.D., Mosconi, L., 2019. Sex and Gender Driven Modifiers of Alzheimer's: The Role for Estrogenic Control Across Age, Race, Medical, and Lifestyle Risks. *Front. Aging Neurosci.* 11.
- Ramirez, A., Wolfgruber, S., Lange, C., Kaduszkiewicz, H., Weyerer, S., Werle, J., Pentzek, M., Fuchs, A., Riedel-Heller, S.G., Luck, T., et al., 2015. Elevated hba 1c is associated with increased risk of incident dementia in primary care patients. *J. Alzheimer's Disease* 44, 1203–1212.
- Randolph Jr, J.F., Zheng, H., Sowers, M.R., Crandall, C., Crawford, S., Gold, E.B., Vuga, M., 2011. Change in follicle-stimulating hormone and estradiol across the menopausal transition: effect of age at the final menstrual period. *J. Clin. Endocrinol. Metab.* 96, 746–754.
- Ransohoff, R.M., 2016. How neuroinflammation contributes to neurodegeneration. *Science* 353, 777–783.
- Razay, G., Vreugdenhil, A., Wilcock, G., 2006. Obesity, abdominal obesity and alzheimer disease. *Dementia and geriatric cognitive disorders* 22, 173–176.

- Reitz, C., 2012. Dyslipidemia and dementia: current epidemiology, genetic evidence, and mechanisms behind the associations. *J. Alzheimer's Dis.* 30, S127–S145.
- Roa-Díaz, Z.M., Raguindin, P.F., Bano, A., Laine, J.E., Muka, T., Glisic, M., 2021. Menopause and cardiometabolic diseases: What we (don't) know and why it matters. *Maturitas* 152, 48–56.
- Rosen, A.F., Roalf, D.R., Ruparel, K., Blake, J., Seelaus, K., Villa, L.P., Ciric, R., Cook, P. A., Davatzikos, C., Elliott, M.A., et al., 2018. Quantitative assessment of structural image quality. *Neuroimage* 169, 407–418.
- Ruth, K.S., Day, F.R., Hussain, J., Martínez-Marchal, A., Aiken, C.E., Azad, A., Thompson, D.J., Knoblochova, L., Abe, H., Tarry-Adkins, J.L., et al., 2021. Genetic insights into biological mechanisms governing human ovarian ageing. *Nature* 596, 393–397.
- Sachdev, P.S., Parslow, R., Wen, W., Anstey, K., Easteal, S., 2009. Sex differences in the causes and consequences of white matter hyperintensities. *Neurobiol. Aging* 30, 946–956.
- Samargandy, S., Matthews, K.A., Brooks, M.M., Barinas-Mitchell, E., Magnani, J.W., Janssen, I., Kazlauskaitė, R., El Khoudary, S.R., 2021. Abdominal visceral adipose tissue over the menopause transition and carotid atherosclerosis: the SWAN heart study. *Menopause* 28, 626–633.
- Schelbaum, E., Loughlin, L., Jett, S., Zhang, C., Jang, G., Malviya, N., Hristov, H., Pahlajani, S., Isaacson, R., Dyke, J.P., Kamel, H., Brinton, R.D., Mosconi, L., 2021. Association of Reproductive History With Brain MRI Biomarkers of Dementia Risk in Midlife. *Neurology* 97, e2328–e2339.
- Scott, E., Zhang, Q.-G., Wang, R., Vadlamudi, R., Brann, D., 2012. Estrogen neuroprotection and the critical period hypothesis. *Front. Neuroendocrinol.* 33, 85.
- Shansky, R.M., Murphy, A.Z., 2021. Considering sex as a biological variable will require a global shift in science culture. *Nature Neurosci.* 24, 457–464.
- Siiteri, P.K., 1987. Adipose tissue as a source of hormones. *Am. J. Clin. Nutr.* 45, 277–282.
- Simpson, E.R., 2003. Sources of estrogen and their importance. *J. Steroid Biochem. Mol. Biol.* 86, 225–230.
- Smith, S.M., Vidaurre, D., Alfaro-Almagro, F., Nichols, T.E., Miller, K.L., 2019. Estimation of brain age delta from brain imaging. *NeuroImage*.
- Soreca, I., Rosano, C., Jennings, J.R., Sheu, L.K., Kuller, L.H., Matthews, K.A., Aizenstein, H.J., Gianaros, P.J., 2009. Gain in adiposity across 15 years is associated with reduced gray matter volume in healthy women. *Psychosom. Med.* 71, 485.
- Steiner, B., Berry, D., 2022. The regulation of adipose tissue health by estrogens. *Front. Endocrinol.* 13.
- Subramaniapillai, S., Rajagopal, S., Snytte, J., Otto, A.R., Einstein, G., Rajah, M.N., 2021. Sex differences in brain aging among adults with family history of Alzheimer's disease and APOE4 genetic risk. *NeuroImage: Clinical* 30, 102620.
- Subramaniapillai, S., Suri, S., Barth, C., Maximov, I.I., Voldsbekk, I., van der Meer, D., Gurholt, T.P., Beck, D., Draganski, B., Andreassen, O.A., Ebmeier, K.P., 2022. Sex- and age-specific associations between cardiometabolic risk and white matter brain age in the UK Biobank cohort. *Human brain mapping* 43 (12), 3759–3774.
- Sung, L., Hayden, J., Greenberg, M.L., Koren, G., Feldman, B.M., Tomlinson, G.A., 2005. Seven items were identified for inclusion when reporting a bayesian analysis of a clinical study. *J. Clin. Epidemiol.* 58, 261–268.
- Tang, X., Zhao, W., Lu, M., Zhang, X., Zhang, P., Xin, Z., Sun, R., Tian, W., Cardoso, M.A., Yang, J., et al., 2021. Relationship between central obesity and the incidence of cognitive impairment and dementia from cohort studies involving 5,060,687 participants. *Neurosci. Biobehav. Rev.* 130, 301–313.
- Tao, X., Jiang, A., Yin, L., Li, Y., Tao, F., Hu, H., 2015. Body mass index and age at natural menopause: a meta-analysis. *Menopause* 22, 469–474.
- Taylor, C., Pritschet, L., Yu, S., Jacobs, E.G., 2019. Applying a women's health lens to the study of the aging brain. *Front. Human Neurosci.* 13, 224.
- Than, S., Moran, C., Beare, R., Vincent, A.J., Collyer, T.A., Wang, W., Callisaya, M.L., Thomson, R., Phan, T.G., Fornito, A., et al., 2021. Interactions between age, sex, menopause, and brain structure at midlife: A uk biobank study. *J. Clin. Endocrinol. Metab.* 106, 410–420.
- Than, S., Moran, C., Collyer, T.A., Beare, R.J., Lane, E.M., Vincent, A.J., Wang, W., Callisaya, M.L., Thomson, R., Phan, T.G., et al., 2022. Associations of sex, age, and cardiometabolic risk profiles with brain structure and cognition: A uk biobank latent class analysis. *Neurology*.
- Thurston, R.C., Aizenstein, H.J., Derby, C.A., Sejdíć, E., Maki, P.M., 2016. Menopausal hot flashes and white matter hyperintensities. *Menopause (New York, NY)* 23, 27.
- Van Den Heuvel, D., Admiraal-Behloul, F., Ten Dam, V., Olofsen, H., Bollen, E., Murray, H., Blauw, G., Westendorp, R., De Craen, A., Van Buchem, M., et al., 2004. Different progression rates for deep white matter hyperintensities in elderly men and women. *Neurology* 63, 1699–1701.
- Veit, R., Kullmann, S., Heni, M., Machann, J., Häring, H.-U., Fritsche, A., Preissl, H., 2014. Reduced cortical thickness associated with visceral fat and BMI. *NeuroImage: Clinical* 6, 307–311.
- Veldsman, M., Kindalova, P., Husain, M., Kosmidis, I., Nichols, T.E., 2020. Spatial distribution and cognitive impact of cerebrovascular risk-related white matter hyperintensities. *NeuroImage: Clinical* 28, 102405.
- Voldsbekk, I., Barth, C., Maximov, I.I., Kaufmann, T., Beck, D., Richard, G., Moberget, T., Westlye, L.T., de Lange, A.-M.G., 2021. A history of previous childbirths is linked to women's white matter brain age in midlife and older age. *Hum. Brain Mapp.* 42, 4372–4386.
- Vuorinen, M., Damangir, S., Niskanen, E., Miralbell, J., Rusanen, M., Spulber, G., Soininen, H., Kivipelto, M., Solomon, A., 2014. Coronary Heart Disease and Cortical Thickness, Gray Matter and White Matter Lesion Volumes on MRI. *PLOS ONE* 9, e109250.
- Waaseth, M., Bakken, K., Dumeaux, V., Olsen, K.S., Rylander, C., Figenschau, Y., Lund, E., 2008. Hormone replacement therapy use and plasma levels of sex hormones in the norwegian women and cancer postgenome cohort—a cross-sectional analysis. *BMC Women's Health* 8, 1–11.
- Walhovd, K.B., Fjell, A.M., Wang, Y., Amlien, I.K., Mowinckel, A.M., Lindenberger, U., Düzel, S., Bartrés-Faz, D., Ebmeier, K.P., Drevon, C.A., Baaër, W.F., 2022. Education and income show heterogeneous relationships to lifespan brain and cognitive differences across European and US cohorts. *Cerebral cortex* 32 (4), 839–854.
- Wang, G., Lv, J., Qiu, X., An, Y., 2019. Integrating genome-wide association and eQTLs studies identifies the genes associated with age at menarche and age at natural menopause. *PLoS ONE* 14, e0213953.
- Wartolowska, K.A., Webb, A.J.S., 2021. Midlife blood pressure is associated with the severity of white matter hyperintensities: analysis of the uk biobank cohort study. *Eur. Heart J.* 42, 750–757.
- Wen, W., Sachdev, P.S., Li, J.J., Chen, X., Anstey, K.J., 2009. White matter hyperintensities in the forties: their prevalence and topography in an epidemiological sample aged 44–48. *Human Brain Mapp.* 30, 1155–1167.
- Whitmer, R., Gustafson, D., Barrett-Connor, E., Haan, M., Gunderson, E., Yaffe, K., 2008. Central obesity and increased risk of dementia more than three decades later. *Neurology* 71, 1057–1064.
- Widya, R.L., Kroft, L.J., Altmann-Schneider, I., van den Berg-Huysmans, A.A., van der Bijl, N., de Roos, A., Lamb, H.J., van Buchem, M.A., Slagboom, P.E., van Heemst, D., et al., 2015. Visceral adipose tissue is associated with microstructural brain tissue damage. *Obesity* 23, 1092–1096.
- Wiggs, A.G., Chandler, J.K., Aktas, A., Sumner, S.J., Stewart, D.A., 2021. The Effects of Diet and Exercise on Endogenous Estrogens and Subsequent Breast Cancer Risk in Postmenopausal Women. *Frontiers in Endocrinology* 12, 1140.
- Yamashiro, K., Tanaka, R., Tanaka, Y., Miyamoto, N., Shimada, Y., Ueno, Y., Urabe, T., Hattori, N., 2014. Visceral fat accumulation is associated with cerebral small vessel disease. *Eur. J. Neurol.* 21, 667–673.
- Yang, L., Lin, L., Kartsonaki, C., Guo, Y., Chen, Y., Bian, Z., Xie, K., Jin, D., Li, L., Lv, J., et al., 2017. Menopause characteristics, total reproductive years, and risk of cardiovascular disease among chinese women. *Circulation: Cardiovasc. Q. Outcomes* 10, e004235.
- Yoshida, Y., Chen, Z., Baudier, R.L., Krousel-Wood, M., Anderson, A.H., Fonseca, V.A., Mauvais-Jarvis, F., 2022. Sex differences in the progression of metabolic risk factors in diabetes development. *JAMA Network Open* 5, e2222070.
- Zárate, S., Stevnsner, T., Gredilla, R., 2017. Role of Estrogen and Other Sex Hormones in Brain Aging. *Neuroprotection and DNA Repair. Frontiers in Aging. Neuroscience* 9.
- Zeki Al Hazzouri, A., Stone, K.L., Haan, M.N., Yaffe, K., 2013. Leptin, mild cognitive impairment, and dementia among elderly women. *Journals of Gerontology Series A Biomedical Sciences and Medical Sciences* 68 (2), 175–180.
- Zeydan, B., Tosakulwong, N., Schwarz, C.G., Senjem, M.L., Gunter, J.L., Reid, R.I., Rocca, L.G., Lesnick, T.G., Smith, C.Y., Bailey, K.R., et al., 2019. Association of bilateral salpingo-oophorectomy before menopause onset with medial temporal lobe neurodegeneration. *JAMA Neurol.* 76, 95–100.
- Zhao, W., Smith, J.A., Bielak, L.F., Ruiz-Narvaez, E.A., Yu, M., Hood, M.M., Peyser, P.A., Kardia, S.L., Harlow, S.D., 2021. Associations between polygenic risk scores for age at menarche and menopause, reproductive timing, and serum hormone levels in multiple race/ethnic groups. *Menopause* 28, 819–828.
- Zhu, D., Chung, H.F., Pandeya, N., Dobson, A.J., Hardy, R., Kuh, D., Brunner, E.J., Bruinisma, F., Giles, G.G., Demakos, P., Lee, J.S., 2019. Premenopausal cardiovascular disease and age at natural menopause: a pooled analysis of over 170,000 women. *European journal of epidemiology* 34 (3), 235–246.
- Zsakai, A., Mascie-Taylor, N., Bodzsar, E.B., 2015. Relationship between some indicators of reproductive history, body fatness and the menopausal transition in Hungarian women. *J. Physiol. Anthropol.* 34, 35.
- Zsido, R.G., Heinrich, M., Slavich, G.M., Beyer, F., Kharabian Masouleh, S., Kratzsch, J., Raschpichler, M., Mueller, K., Scharrer, U., Löffler, M., Schroeter, M.L., Stumvoll, M., Villringer, A., Witte, A.V., Sacher, J., 2019. Association of Estradiol and Visceral Fat With Structural Brain Networks and Memory Performance in Adults. *JAMA Network Open* 2, e196126.