








## RESEARCH ARTICLE

# Mortality during and following hospital admission among school-aged children: a cohort study [version 1; peer review: 2 approved, 1 approved with reservations]

Moses M Ngari <sup>1,2</sup>, Christina Obiero<sup>1</sup>, Martha K Mwangome<sup>1,2</sup>, Amek Nyaguara <sup>1</sup>, Neema Mturi<sup>1</sup>, Sheila Murunga<sup>1</sup>, Mark Otiende <sup>1</sup>, Per Ole Iversen<sup>3-5</sup>, Gregory W Fegan <sup>1,6</sup>, Judd L Walson<sup>2,7</sup>, James A Berkley <sup>1,2,8</sup>

<sup>1</sup>KEMRI/Wellcome Trust Research Programme, P.O Box 230 - 80108, Kilifi, Kenya

<sup>2</sup>The Childhood Acute Illness & Nutrition Network (CHAIN), Nairobi, Kenya

<sup>3</sup>Department of Nutrition, IBM, University of Oslo, Oslo, Norway

<sup>4</sup>Department of Haematology, Oslo University Hospital, Oslo, Norway

<sup>5</sup>Division of Human Nutrition, Stellenbosch University, Tygerberg, South Africa

<sup>6</sup>Swansea Trials Unit, Swansea University Medical School, Swansea, UK

<sup>7</sup>Departments of Global Health, Medicine, Pediatrics and Epidemiology, University of Washington, Seattle, Seattle, USA

<sup>8</sup>Centre for Tropical Medicine & Global Health, University of Oxford, Oxford, UK

**v1** First published: 08 Oct 2020, 5:234  
<https://doi.org/10.12688/wellcomeopenres.16323.1>

Latest published: 08 Oct 2020, 5:234  
<https://doi.org/10.12688/wellcomeopenres.16323.1>

## Abstract




**Background:** Far less is known about the reasons for hospitalization or mortality during and after hospitalization among school-aged children than under-fives in low- and middle-income countries. This study aimed to describe common types of illness causing hospitalisation; inpatient mortality and post-discharge mortality among school-age children at Kilifi County Hospital (KCH), Kenya.




**Methods:** A retrospective cohort study of children 5–12 years old admitted at KCH, 2007 to 2016, and resident of the Kilifi Health Demographic Surveillance System (KHDSS). Children discharged alive were followed up for one year by quarterly census. Main outcomes were inpatient and one-year post-discharge mortality.

**Results:** We included 3,907 admissions among 3,196 children with a median age of 7 years 8 months (IQR 74–116 months). Severe anaemia (792, 20%), malaria (749, 19%), sickle cell disease (408, 10%), trauma (408, 10%), and severe pneumonia (340, 8.7%) were the commonest reasons for admission. Comorbidities included 623 (16%) with severe wasting, 386 (10%) with severe stunting, 90 (2.3%) with oedematous malnutrition and 194 (5.0%) with HIV infection. 132 (3.4%) children died during hospitalisation. Inpatient death was associated with signs of disease severity, age, bacteraemia, HIV infection and severe stunting. After discharge, 89/2,997 (3.0%) children died within one year during 2,853 child-years observed (31.2 deaths [95%CI, 25.3–38.4] per 1,000 child-years). 63/89 (71%) of post-discharge deaths occurred within three months and 45% of deaths occurred

## Open Peer Review

Reviewer Status 

	Invited Reviewers		
	1	2	3
<b>version 1</b>			
08 Oct 2020	report	report	report

1. **Bruno Masquelier** , Catholic University of Louvain, Leuven, Belgium
2. **Duncan Hau** , Weill Cornell Medical College, New York, USA
3. **Matthew Wiens** , University of British Columbia, Vancouver, Canada

Any reports and responses or comments on the article can be found at the end of the article.

outside hospital. Post-discharge mortality was positively associated with weak pulse, tachypnoea, severe anaemia, HIV infection and severe wasting and negatively associated with malaria.

**Conclusions:** Reasons for admissions are markedly different from those reported in under-fives. There was significant post-discharge mortality, suggesting hospitalisation is a marker of risk in this population. Our findings inform guideline development to include risk stratification, targeted post-discharge care and facilitate access to healthcare to improve survival in the early months post-discharge in school-aged children.

### Keywords

Mortality, Inpatient, Post-discharge, Reason for admission, School-aged children, Cohort, Africa



This article is included in the [KEMRI | Wellcome Trust gateway](#).

**Corresponding author:** Moses M Ngari ([mngari@kemri-wellcome.org](mailto:mngari@kemri-wellcome.org))

**Author roles:** **Ngari MM:** Conceptualization, Formal Analysis, Methodology, Writing – Original Draft Preparation, Writing – Review & Editing; **Obiero C:** Investigation, Methodology, Writing – Original Draft Preparation, Writing – Review & Editing; **Mwangome MK:** Conceptualization, Methodology, Writing – Review & Editing; **Nyaguara A:** Data Curation, Project Administration, Writing – Review & Editing; **Mturi N:** Investigation, Writing – Review & Editing; **Murunga S:** Data Curation, Writing – Review & Editing; **Otiende M:** Data Curation, Writing – Review & Editing; **Iversen PO:** Methodology, Supervision, Writing – Review & Editing; **Fegan GW:** Methodology, Supervision, Writing – Review & Editing; **Walson JL:** Methodology, Supervision, Writing – Review & Editing; **Berkley JA:** Conceptualization, Funding Acquisition, Investigation, Methodology, Supervision, Writing – Review & Editing

**Competing interests:** No competing interests were disclosed.

**Grant information:** This work was supported by the Wellcome Trust through core funding for the inpatient and community surveillance [098532, 092654, 084633 and 083579]. JAB, JW, MKM and MMN are supported by the Bill & Melinda Gates Foundation as part of Childhood Acute Illness and Nutrition (CHAIN) Network [OPP1131320]. JAB is currently funded by the MRC/DFID/Wellcome Trust Joint Global Health Trials scheme [MR/M007367/1]. MMN is currently supported by the WHO/TDR Clinical Research and Development Fellowships Program. MMN had full access to all the data in the study and takes responsibility for the integrity of the data and the accuracy of the data analysis.

*The funders had no role in study design, data collection and analysis, decision to publish, or preparation of the manuscript.*

**Copyright:** © 2020 Ngari MM *et al.* This is an open access article distributed under the terms of the [Creative Commons Attribution License](#), which permits unrestricted use, distribution, and reproduction in any medium, provided the original work is properly cited.

**How to cite this article:** Ngari MM, Obiero C, Mwangome MK *et al.* **Mortality during and following hospital admission among school-aged children: a cohort study [version 1; peer review: 2 approved, 1 approved with reservations]** Wellcome Open Research 2020, 5:234 <https://doi.org/10.12688/wellcomeopenres.16323.1>

**First published:** 08 Oct 2020, 5:234 <https://doi.org/10.12688/wellcomeopenres.16323.1>

## Introduction

Despite a remarkable decline in global child mortality, more than 6 million children died in 2018, of which 0.9 million (15%) deaths occurred among children aged 5 to 14 years, mostly in low- and middle-income countries (LMICs)<sup>1,2</sup>. Public health efforts to improve survival are generally directed towards children <5 years old<sup>2-4</sup>. Despite there being no specific new health interventions targeting children aged 5 to 14 years, their mortality risk from 1990 to 2016 declined by 51% globally<sup>4</sup>. However, since 2000, the annual rate of mortality reduction in this group (2.7%) has been lower than amongst children <5 years old (4.0%)<sup>4</sup>.

Children  $\geq 5$  years old may be admitted with different conditions than younger children and their risks for inpatient or post-discharge mortality may also differ. However, there are only limited data describing reasons for admission and mortality-patterns in LMICs. Among school-aged children admitted to six Kenyan hospitals in 2013, 3.5% of children aged 5 to 9 years and 5.0% of children 10 to 14 years died<sup>5</sup>. Infectious diseases such as malaria were the main reported causes of death in children  $\geq 5$  years<sup>2,5,6</sup>.

Post-discharge mortality is increasingly recognized as a significant contributor to the burden of mortality among under-fives in LMICs and adults in resource-rich settings<sup>7-9</sup>. The most recent systematic review (2018) of paediatric post-discharge mortality in LMICs did not identify any studies focusing specifically on school-aged children<sup>7,8</sup>. Of 24 studies reviewed, four included children  $\geq 5$  years old. A study in Bangladesh with a sample size of 74 children aged 24 to 72 months did not report the number of children who were  $\geq 5$  years old<sup>10</sup>. A large study in Kenya among children 0 to 15 years old (N=14,971) reported that 16% (88/535) of all post-hospital discharge deaths were among children aged 5 to 14 years<sup>11</sup> and two studies from Uganda with children aged 2 months to 12 years reported ~1% and 3.8% children dying after discharge, respectively, but were not disaggregated by age group<sup>12,13</sup>. Since the latest systematic review (2018)<sup>7</sup>, four more studies have evaluated paediatric post-discharge mortality in LMICs<sup>3,14-16</sup>. Hau *et al.* included children aged 2 to 12 years followed-up for 12 months after discharge from two hospitals in Tanzania and found that 16% (26/161) of children aged 5 to 12 years died after hospital discharge<sup>3</sup>. Post-discharge mortality risk was reported to be higher than that of children <5 years (hazard ratio 2.44 (95%CI, 1.37 to 4.34))<sup>3</sup>. The commonest diagnoses at admission were malaria and sickle cell disease<sup>3</sup>. The second study from southern Mozambique included 18,023 children aged <15 years, of which 83/3,816 (2.2%) aged  $\geq 5$  years died within three months after discharge<sup>14</sup>. The third study was from Kenya, but excluded children  $\geq 5$  years old<sup>15</sup>. The fourth study from Tanzania included children aged 2 to 12 years, of whom 47/466 (10%) died one year after hospital discharge, but deaths were not disaggregated by age<sup>16</sup>.

We aimed to describe the reasons for hospitalisation, underlying illnesses, and the clinical characteristics and features associated with mortality during hospitalisation and for one year after

discharge among children 5 to 12 years old admitted to a rural hospital in Kenya.

## Methods

### Study setting

The study was conducted at Kilifi County Hospital (KCH), located on the Indian Ocean coast in Kenya. KCH is a secondary care hospital handling approximately 5,000 annual paediatric admissions. Most of the population served by the hospital are rural farmers. Clinical care at the hospital follows Kenyan and World Health Organization (WHO) guidelines.

Systematic data including clinical signs, anthropometry and laboratory investigations at admission have been collected by research clinicians and entered in a database since 1998. At discharge or death, up to two final diagnoses are assigned by the discharging clinician. From 2002, approximately 250,000 residents in an area of 891 km<sup>2</sup> neighbouring KCH have been enumerated every four months by the Kilifi Health and Demographic Surveillance System (KHDSS) for births, deaths and in- or out-migration<sup>17</sup>. Data on admissions to KCH are linked to the KHDSS population database.

### Study population

Children aged 60 to 155 months admitted to KCH between 2007 and 2016 and resident within the KHDSS were included. The post-discharge analysis included all children discharged alive. Data from the KHDSS up to the 2018 August census round were used to confirm vital status post-discharge.

### Study design

We performed a retrospective cohort study. Exposures evaluated were clinical and demographic features, anthropometry and laboratory variables at admission. Outcomes examined were inpatient and one-year post-discharge mortality.

### Data sources/measurement

Anthropometry, clinical history and examination, complete blood count, HIV antibody test, blood smear for malaria and blood culture were systematically conducted at admission as previously described<sup>18</sup>. Anthropometry was taken by trained clinical assistants: mid-upper arm circumference (MUAC) using a non-stretchable insertion tape (TALC, St Albans, UK), weight using an electronic scale (Seca 825, Birmingham, UK) and height using a stadiometer (Seca 215, Birmingham, UK). HIV antibody testing used two rapid tests (Determine; Inverness Medical, FL, USA; and Unigold; Trinity Biotech, Bray, Ireland). Caregivers of children with a positive HIV antibody test were counselled and referred to an HIV comprehensive care clinic. Details of subsequent clinic attendance and antiretroviral treatment were not recorded on the database. Children found to have malnutrition, sickle cell disease, tuberculosis, cardiac or neurological conditions were referred to outpatient clinics for continued care.

For this analysis, malaria was defined as a blood smear positive for *Plasmodium falciparum* and anaemia was defined as moderate (haemoglobin 8 to 11.4 g/dl) or severe (haemoglobin

<8g/dl), as per WHO guidelines<sup>19</sup>. Biochemical tests, radiology, sickle cell testing, lumbar puncture and other investigations were done at the discretion of the treating clinician. Meningitis was diagnosed using the cerebrospinal fluid (CSF) examination and culture as follows: positive culture for known pathogen, positive CSF microscopy (Gram stain and/or Indian ink stain), positive antigen test (*S. pneumoniae*, *H. influenzae* type B, *N. meningitidis*, and *C. neoformans*) and CSF white blood cell count (WBC)  $\geq 10$  cells/ $\mu$ l.

### Statistical methods

Statistical analysis was performed using STATA (version 15.1; StataCorp, College Station, TX, USA). All eligible admissions and discharges from the population of KCH residents of KHDSS within the study period were included in the study, therefore, no formal sample size estimation was conducted.

MUAC-for-age z-score (MUACZ) were calculated using the method of Mramba *et al.*<sup>20</sup>. Body mass index-for-age z-score (BMIZ), weight-for-age (WAZ) and height-for-age z-score (HAZ) were calculated using WHO 2007 growth references and classified as normal ( $\geq -2Z$ ), moderate (-3 to -2Z) and severe ( $< -3Z$ )<sup>21</sup>. Anthropometric measurements were regarded as missing not at random. To ensure all children were included in the multivariable regression models, we used categorical anthropometry variables and included a 'missing' category in the analysis.

Because the children could be admitted more than once during the study period, for the analysis of inpatient deaths we performed a multiple-admission analysis where each child could contribute more than one admission record using their unique person IDs. To examine features at admission associated with inpatient mortality, we used a backward stepwise log-binomial regression model with robust standard errors to account for multiple admissions retaining variables with a P-value  $< 0.1$  and reported adjusted risk ratios for variables with P-value  $< 0.05$  in the final multivariable model.

To calculate the post-discharge mortality rate, time at risk was defined as the date of hospital discharge until death, out-migration or 365 days later. We performed a multiple-discharge analysis where children with multiple admissions with live discharge contributed separate person-time periods when there was no overlap during the one-year follow-up. After assessing and confirming the proportional hazard assumption was not violated using the Schoenfeld residuals test, we used a Cox proportional hazard regression model with robust standard errors to account for multiple discharges to examine admission features associated with post-discharge mortality.

For both inpatient and post-discharge regression analysis, individual clinical signs, laboratory tests and final diagnoses assigned by clinical staff were used for diagnoses not captured by syndromic definitions using clinical signs. In the regression models, we used MUACZ to define undernutrition rather than BMIZ because MUACZ predicts mortality as effectively as BMIZ<sup>20</sup>, is less affected by dehydration than weight-based measures<sup>22</sup>, and fewer children were missing MUAC measurements.

We initially excluded biochemical features that were not systematically collected and performed exploratory analyses of these features. We tested if the effects of HIV status, anaemia and malaria were modified by age and if the malaria effects on post-discharge mortality were modified by anaemia or nutritional status using likelihood-ratio tests. Goodness-of-fit of the multivariable regression models was assessed using the area under receiver operating characteristic curves (AUC) and internally validated using the bootstrapping method with 1000 resampling with replacement<sup>23</sup>.

### Ethical statement

The Kenya Medical Research Institute (KEMRI) National Ethics Review Committee (SCC 2778) approved the study. Written consent for the children's participation in the original study was provided by their parents/guardians, which included consent for subsequent analyses.

### Results

From 2007 to 2016, there were 41,107 paediatric admissions to KCH, of which 7,063 (17%) were aged 5 to 12 years (Figure 1). Of these, 3,907 (55%) admissions among 3,196 children were KHDSS residents and were included in this analysis (Figure 1). Their median age was 92 (IQR 74–116) months and 1,673 (43%) were female. Of the 3,907 admissions, 792 (20%) presented with severe anaemia, 749 (19%) with malaria, 408 (10%) with sickle cell disease (known at admission or diagnosed during admission), 408 (10%) had suffered trauma, 340 (8.7%) with severe pneumonia and 194 (5.0%) with diarrhoea.

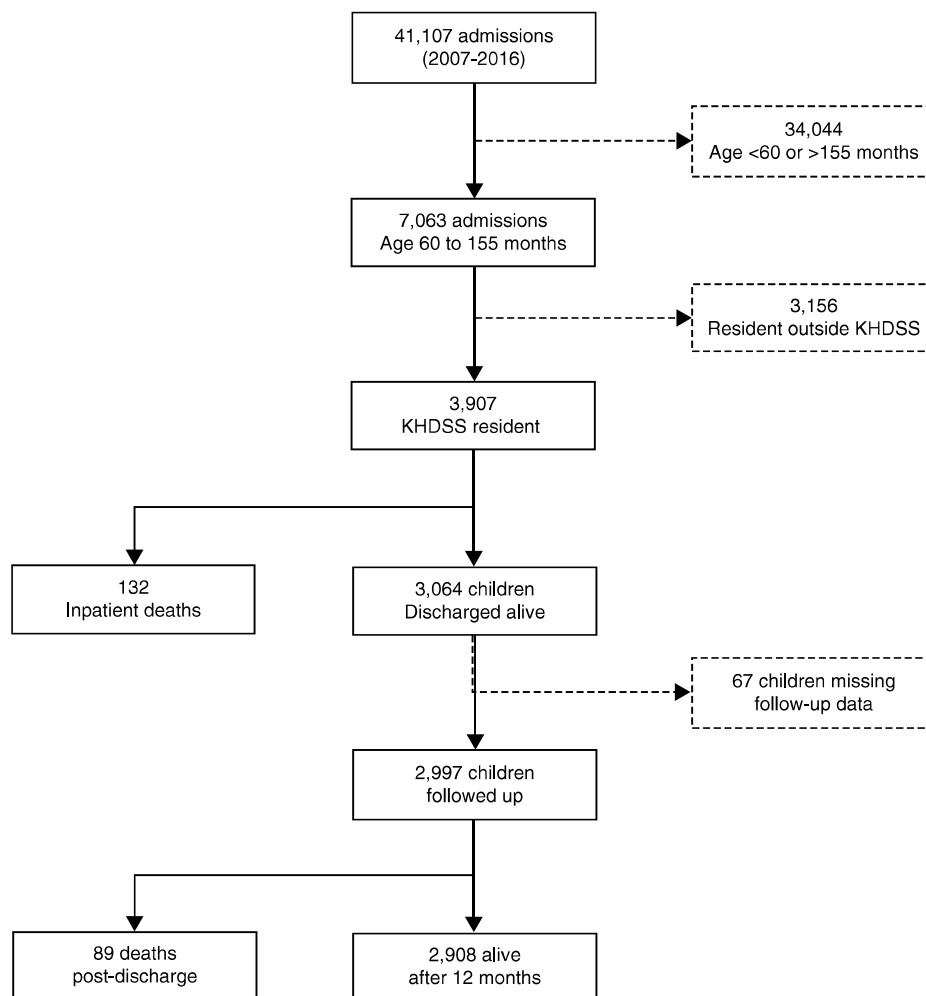
Underlying chronic conditions included stunting in 1,143 (29%), severe stunting in 90 (2.3%), severe wasting (MUACZ  $< -3$ ) in 623 (16%), HIV infection in 194 (5.0%), and nutritional oedema in 90 (2.3%) (Table 1, Table 2 and Extended data Table S1).

A total of 138 (3.5%) children had detectable bacteraemia (Table 1). The commonest bacteria isolated were: *Streptococcus pneumoniae* (47/138, 34%), *Staphylococcus aureus* (32/138, 23%) and non-typhi *Salmonella species* (21/138, 15%) (Extended data Table S2). The final diagnoses assigned by clinicians are shown in Table 2.

There were 132 (3.4%) inpatient deaths. The median (IQR) time to inpatient death was one (1–4) days, while median (IQR) time to discharge among the survivors was three (2–6) days. There were 44 (5.6%), 30 (4.0%), 45 (13%), 23 (17%), 9 (17%), and 10 (5.2%) deaths among those admitted with severe anaemia, malaria, severe pneumonia, bacteraemia, meningitis and diarrhoea, respectively. There were 21 (11%), 34 (5.5%), 10 (2.5%) and 4 (1.2%) deaths among children who were HIV-infected, severely wasted, had sickle cell disease and Epilepsy/convulsion, respectively (Table 2 and Extended data Table S1).

### Factors associated with inpatient mortality

In the multivariable model, older age, signs of disease severity (tachypnoea, history of breathing difficulty, weak pulse and impaired consciousness), HIV infection, bacteraemia and severe



**Figure 1. Study participant recruitment and follow-up.** KHDSS, Kilifi Health Demographic Surveillance System.

stunting were positively associated with inpatient mortality, whilst epilepsy/convulsions were negatively associated with inpatient mortality (Table 3). All variables tested in univariable analysis are shown in *Extended data* Table S3. Being severely wasted was associated with inpatient death in the univariable model, but the effect was attenuated in the multivariable model (*Extended data* Table S3). There was no evidence that the effect of HIV infection on inpatient mortality was modified by age ( $P=0.13$ ), severe wasting ( $P=0.97$ ), malaria ( $P=0.34$ ) or moderate and severe anaemia ( $P=0.13$ ). We found no evidence that anaemia ( $P=0.16$ ), age ( $P=0.21$ ) or severe wasting ( $P=0.14$ ) modified the effect of malaria on inpatient mortality.

In exploratory analysis including biochemical variables, hyperkalaemia and elevated creatinine were associated with inpatient mortality (*Extended data* Table S4).

### Post-discharge mortality

Among the 3,064 children who were discharged alive, follow-up data were missing for 67 (2.2%) children (Figure 1). We therefore analysed data from 2,997 children who accrued 2,853 child-years of observation. Eighty-nine (3.0%) children died during follow-up; 63 (71%), 80 (90%) and 84 (94%) of post-discharge deaths occurred within three, six and nine months of discharge, respectively. The overall mortality rate was 31.2 (95%CI, 25.3 to 38.4) per 1,000 child-years. During the first three, six and nine months after discharge, mortality rate was 244 (95%CI, 190.3 to 311.8), 89.6 (95%CI, 72.0 to 111.6), and 53.2 (95%CI, 43.0 to 65.9) per 1000 child-years, respectively. Forty (45%) deaths occurred without readmission to KCH.

Some signs of disease severity at admission (elevated respiratory rate and presence of weak pulse), HIV infection, severe



**Table 1. Participants' characteristics at admission to hospital.**

Admission characteristics (N=3,907)	No. (%)
<b>Demographics</b>	
Age in months, median (IQR)	92 (74–116)
Sex (female)	1673 (43)
Admitted prior to age 5 years	1152 (29)
<b>Clinical features</b>	
Axillary temp <36°C	238 (6.1)
Axillary temp 36 to 37.5°C	2009 (51)
Axillary temp >37.5°C	1660 (43)
Respiratory rate <20 breaths per min	80 (2.1)
Normal respiratory rate	2179 (56)
Respiratory rate >30 breaths per min	1580 (40)
Subcostal indrawing	249 (6.4)
History of breathing difficulty	432 (11)
Hypoxia (SaO <sub>2</sub> <90%)	130 (3.3)
Heart rate <80 beats per min	156 (4.0)
Normal heart rate	1694 (43)
Heart rate >120 beats per min	2035 (52)
Capillary refill >2 seconds	98 (2.5)
Temperature gradient	152 (3.9)
Weak pulse	85 (2.2)
Lethargy	417 (11)
Sunken eyes	132 (3.4)
Reduced skin turgor	71 (1.8)
Impaired consciousness*	540 (14)
Severe pneumonia	340 (8.7)
Diarrhoea	194 (5.0)
<b>Nutritional status</b>	
Nutritional oedema	90 (2.3)
MUAC-for-age z-score (sd)	-1.89 (1.5)
BMI-for-age z-score (sd)	-1.37 (1.2)
Height-for-age z-score (sd)	-1.46 (1.3)
Weight-for-age z-score (sd)	-1.81 (1.2)
<b>Laboratory investigations</b>	
HIV infected	194 (5.0)
Malaria smear positive	749 (19)

Admission characteristics (N=3,907)	No. (%)
<b>Anaemia</b>	
None (haemoglobin ≥11.5g/dl)	817 (21)
Moderate (haemoglobin 8 to 11.4g/dl)	1497 (38)
Severe (haemoglobin <8g/dl)	792 (20)
<b>Bacteraemia</b>	
	138 (3.5)
<b>Meningitis</b>	
	54 (1.4)

\*Defined as presence of prostration or coma. MUAC, mid-upper arm circumference; BMI, body mass index; sd, standard deviation. 49 (1.3%) records missing MUAC, 442 (11%) records missing BMI, 287 (7.3%) records missing height-for-age z-score, 881 (23%) records missing weight-for-age z-score, 22 (0.6%) records missing heart rate, 68 (1.7%) records missing respiratory rate.

anaemia and severe wasting were positively associated with post-discharge death (Table 3 and Figure 2). Malaria was negatively associated with post-discharge death (Table 3 and Figure 2). Hospital admission duration was not independently associated with post-discharge death (Extended data Table S3).

There was no evidence that the effect of HIV infection on post-discharge mortality was modified by age (P=0.95), anaemia (P=0.25), malaria (P=0.37) or severe wasting (P=0.88). The effect of malaria on post-discharge mortality was not modified by anaemia (P=0.33) but was modified by severe wasting (P=0.007) and weak evidence of being modified by age (P=0.05). Compared to MUACZ ≥-2 with a negative malaria slide, the groups of MUACZ -3 to -2 with a negative malaria slide (HR 3.60 [95%CI, 1.75 to 7.39]) and MUACZ <-3 with a negative malaria slide (HR 6.36 [95%CI, 3.10 to 13.1]) had greater post-discharge mortality. Among children with positive slide results, MUACZ was not associated with post-discharge mortality.

In the exploratory analysis of biochemical variables, hyperkalaemia and elevated creatinine were associated with post-discharge mortality (Extended data Table S5).

## Discussion

In this large study of school-aged children admitted to hospital and systematically followed-up during admission and for one year after discharge, we observed that anaemia, malaria, sickle cell disease and trauma were the leading reasons for admission. This profile is unlike that reported among under-fives, in whom pneumonia and diarrhoea are the leading reasons for admission, accounting for more than two-thirds of hospital admission in Kenya and South Africa<sup>24–26</sup>. All-cause inpatient case fatality was 3.4%, which was similar to the 3.5% previously reported in six hospitals in Kenya among children 5 to 17 years old in 2013<sup>5</sup>. Markers of disease severity at admission were the main predictors of inpatient mortality despite following WHO care guidelines, suggesting that current management strategies and resources may be insufficient for the sickest school-aged children.

**Table 2. Diagnoses assigned at discharge or death.**

Discharge diagnosis (N=3,907)	No. (%) Diagnosis one*		No. (%) Diagnosis two*	
	All admissions (N=3,907)	Inpatient Deaths (N=132)	All admissions (N=3,907)	Inpatient Deaths (N=132)
Malaria	793 (20)	32 (4.0)	41 (1.1)	4 (9.8)
Sickle cell disease	408 (10)	10 (2.5)	94 (2.4)	5 (5.3)
Trauma/fractures/accidents	408 (10)	6 (1.5)	23 (0.6)	1 (4.3)
Anaemia	234 (6.0)	9 (3.8)	254 (6.5)	14 (5.5)
Epilepsy/convulsions	198 (5.1)	2 (1.0)	148 (3.8)	2 (1.4)
Lower respiratory tract infection	196 (5.0)	5 (2.6)	76 (2.0)	2 (2.6)
Snake bite	179 (4.6)	0	1 (0.03)	0
Cellulitis/pyomyositis	110 (2.8)	0	24 (0.6)	0
Gastroenteritis	110 (2.8)	0	28 (0.7)	1 (3.6)
Upper respiratory tract infection	76 (2.0)	0	38 (1.0)	0
Burns	75 (1.9)	1 (1.3)	2 (0.05)	0
Elective surgery	75 (1.9)	0	9 (0.2)	0
Malnutrition	73 (1.9)	1 (1.4)	34 (0.9)	5 (15)
Acute abdomen	69 (1.8)	3 (4.3)	4 (0.1)	0
Immunosuppression	53 (1.4)	8 (15)	114 (2.9)	12 (11)
Meningitis	48 (1.2)	12 (25)	6 (0.2)	1 (17)
Diabetes	44 (1.1)	0	3 (0.08)	0
Encephalopathy	44 (1.1)	5 (11)	11 (0.3)	3 (27)
Others	649 (17) <sup>‡</sup>	38 (5.9) <sup>§</sup>	225 (5.8) <sup>¶</sup>	18 (8.0) <sup>#</sup>
None specified	65 (1.7)	0	2,775 (71)	65 (2.3)

\*Clinicians assign up to two diagnoses at death or discharge.

<sup>‡</sup>Cholera-12, rabies-9, measles-10, tetanus-15, osteomyelitis-20, asthma-44, empyema-3, pleural effusion-3, nephrotic syndrome-52, cerebral palsy-14, pyogenic arthritis-9, congenital disease-32, encephalopathy-44, hydrocephalus-5, acute flaccid paralysis-5, skin disease-19, arthritis-25, poisoning-43, unclassified disease-142, Burkitt's lymphoma-2, dental-3, septicaemia-37, viral infection-14, urinary tract infection-22, viral hepatitis-25, pulmonary tuberculosis-20, otitis media-4, chickenpox-6, genital problems-5, conjunctivitis-5.

<sup>§</sup>Immunosuppression-8, septicaemia-6, pulmonary tuberculosis-5, rabies-5, tetanus-3, heart disease-6, cerebral palsy-1, hydrocephalus-1, Burkitt's lymphoma-1, viral hepatitis-1, chickenpox-1.

<sup>¶</sup>Cholera-4, tetanus-3, osteomyelitis-3, asthma-15, empyema-3, pleural effusion-4, nephrotic syndrome-15, cerebral palsy-16, chromosomal abnormality-2, heart disease-13, developmental delay-5, skin disease-12, poisoning-3, unclassified disease-20, septicaemia-34, conjunctivitis-6, urinary tract infection-18, renal failure-14, viral hepatitis-8, pulmonary tuberculosis-16, otitis media-6, chickenpox-3, genital problems-2, no second diagnosis-2775.

<sup>#</sup>Empyema-1, cerebral palsy-1, chromosomal abnormality-1, unclassified disease-3, septicaemia-7, renal failure-3, pulmonary tuberculosis-1, chickenpox-1.

The 3.0% one-year post-discharge mortality, with almost three-quarters occurring within three months, broadly concurs with that observed in rural Mozambique three months after hospital-discharge (2.2%) among children 5 to 15 years old<sup>14</sup>,

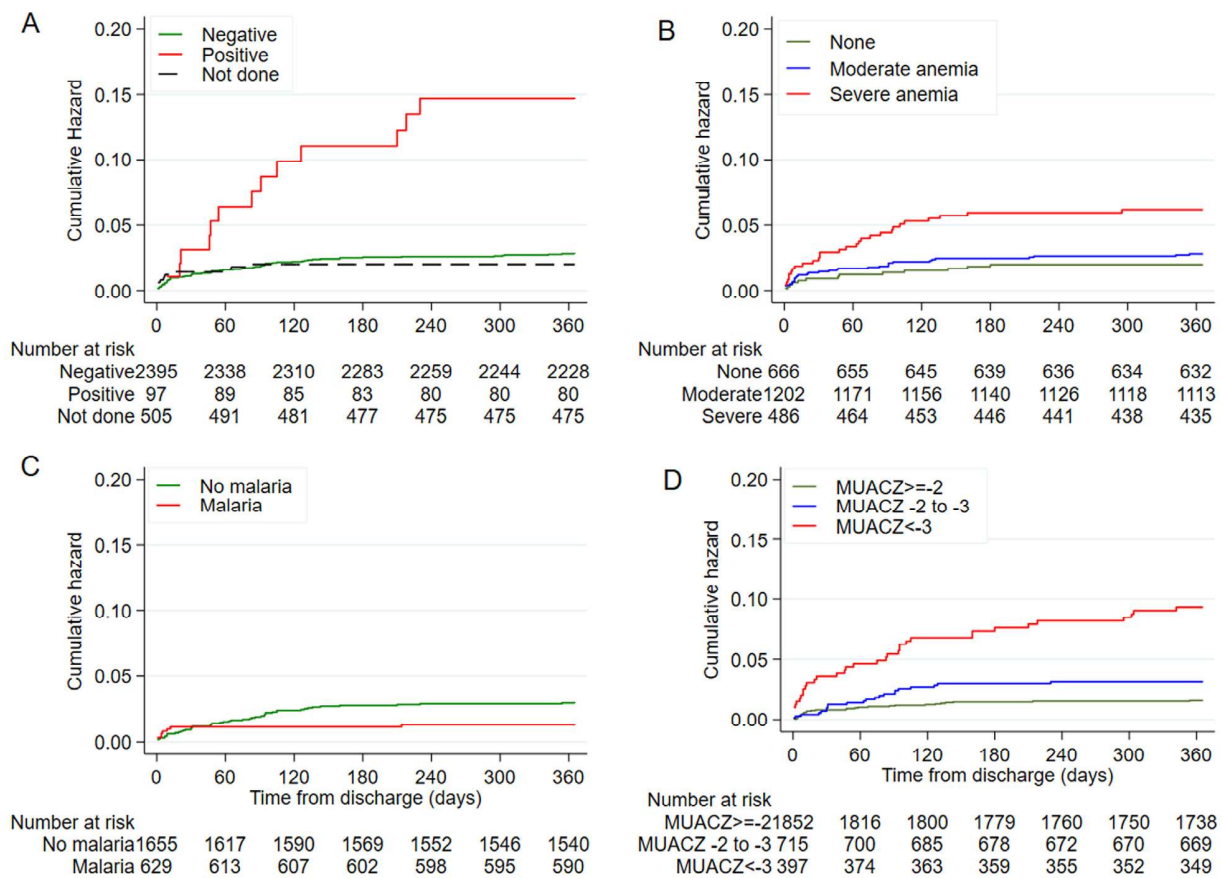
but was much lower than one-year post-discharge mortality (16%) observed among children 5 to 12 years old in Tanzania<sup>3</sup>. However, the Tanzanian study did not stratify results by age above or below 5 years and it seems likely that a higher prevalence of

**Table 3. Multivariable regression analysis of factors associated with inpatient and post-discharge mortality.**

	Inpatient analysis		Post-discharge analysis	
	Adjusted RR (95% CI)	P-value	Adjusted HR (95% CI)	P-value
<b>Demographics</b>				
Age in years	1.01 (1.00 to 1.02)	0.04	-	-
<b>Clinical features at admission</b>				
Respiratory rate per minute				
<20	2.03 (0.78 to 5.29)	0.15	-*	-
20 to 30	Reference		Reference	
>30	2.21 (1.41 to 3.47)	0.001	1.72 (1.12 to 2.63)	0.01
History of breathing difficulty	2.07 (1.40 to 3.06)	<0.001		
Weak pulse	2.18 (1.30 to 3.65)	0.003	3.54 (1.64 to 7.64)	0.001
Impaired consciousness	5.51 (3.76 to 8.10)	<0.001		
<b>Assigned diagnosis at discharge/death</b>				
Epilepsy/convulsions	0.30 (0.12 to 0.73)	<0.001	-	-
<b>Investigations at admission</b>				
HIV infected	1.75 (1.08 to 2.85)	0.02	3.06 (1.69 to 5.54)	<0.001
Malaria slide positive	-	-	0.43 (0.20 to 0.93)	0.03
Anaemia				
None	-	-	Reference	
Moderate	-	-	1.38 (0.73 to 2.61)	0.33
Severe	-	-	2.34 (1.18 to 4.63)	0.02
Bacteraemia	3.69 (2.23 to 6.10)	<0.001	-	-
<b>Nutritional status at admission</b>				
MUAC-for-age Z score				
≥-2	-	-	Reference	
-3 to -2	-	-	1.66 (0.95 to 2.91)	0.08
<-3	-	-	3.74 (2.24 to 6.25)	<0.001
Missing	-	-	4.99 (1.47 to 17.0)	0.01
HAZ-for-age Z score				
≥-2	Reference			
-3 to -2	0.88 (0.54 to 1.44)	0.62	-	-
<-3	2.04 (1.30 to 3.20)	0.002	-	-
Missing	1.71 (1.06 to 2.76)	0.03	-	-
<b>Model performance</b>				
AUC (95% CI)	0.84 (0.81 to 0.88)		0.76 (0.70 to 0.81)	
Bootstrap AUC (95% CI)	.85 (0.81 to 0.89)		0.76 (0.70 to 0.81)	

Variables are included in this table if they were selected through the backward step-wise approach and have adjusted P<0.05 for either inpatient or post-discharge analysis. All variables considered in the regression models are shown in the univariable analysis models (Table S3). MUAC, mid-upper arm circumference; HAZ, height-for-age z-score; AUC, area under receiver operating characteristics; RR, risk ratio from the log-binomial regression model; HR, hazard ratio from Cox proportion regression model, the global Schoenfeld residuals test for proportional hazard assumption P-value=0.11. \*Insufficient numbers.





**Figure 2.** Cumulative hazard curves for post-discharge mortality: **A**) by HIV status; **B**) by anaemia categories; **C**) by malaria status and **D**) by mid-upper arm circumference (MUAC)-for-age z-scores groups.

non-communicable diseases including cancer and heart disease reported in that population may have contributed to the higher risk of post-discharge death.

Tachypnoea, which may be associated with anaemia, hypoxia, sepsis or pneumonia, and weak pulse, a sign of circulatory insufficiency, were independently associated with post-discharge mortality. Undernutrition was associated with post-discharge mortality, similar to most previous studies, which have identified nutritional status as a major risk-factor for post-discharge mortality in under-fives<sup>3,7,14,15,27,28</sup>. We previously showed that MUACZ is valuable in predicting post-discharge mortality among children >5 years in a model only adjusted for age, sex and HIV status<sup>20</sup>.

We found severe anaemia was independently associated with post-discharge mortality; however, prior evidence of the effect of haemoglobin concentration on post-discharge mortality has been inconsistent, and may be influenced by the predominant causes of anaemia and local transfusion policies<sup>3,14,16,29-32</sup>.

Interestingly, we found no significant effect modification by anaemia on the effect of malaria on post-discharge mortality. The finding that children with malaria had lower post-discharge mortality is consistent with previous reports from this site among children <5 years of age where malaria parasitaemia had an apparently 'protective' effect on post-discharge mortality<sup>11</sup>. This likely reflects the fact that when appropriately treated, mortality risk in children with malaria may be lower than in children with other causes of a similar severity of illness.

In exploratory analyses, elevated creatine and hyperkalaemia, markers of impaired kidney function, were identified as predictors of both inpatient and post-discharge mortality. One study among children aged 2 to 15 years in Tanzania identified estimated glomerular filtration rate <60 ml/min/1.73m<sup>2</sup> as a predictor of one-year post-discharge mortality<sup>3</sup>. This is an important finding since dehydration and sepsis are common and associated with acute kidney injury<sup>33</sup>, and current guidelines recommend potentially nephrotoxic empiric gentamicin, without capacity for monitoring levels<sup>34</sup>. However, clinical trials that could

delineate attributable nephrotoxicity from background risks from renal disease, serious illness and dehydration have not yet been done.

Overall, our findings add to previous data in under-fives suggesting that hospitalisation marks an extended period of vulnerability, and reports suggesting that significant post-discharge deaths occur outside hospital<sup>7,11,27</sup>. The transition from inpatient to home care in the immediate three-month period following hospital discharge appears to be a critical period of risk. Risk stratification and targeted interventions for this population during this period might improve survival<sup>4</sup>. However, current services, such as for the management of malnutrition in the community or those to manage anaemia, largely focus on children <5 years of age and may not operate in a way that fully addresses the mortality risk in this population<sup>35,36</sup>.

Strengths of this study include the large sample size, high rates of follow-up and the detailed longitudinal data available. However, this study also had some limitations. We used data from a single hospital, including only children resident within the nearby KHDSS, thus our results may not be generalizable to other sites or children living further away from the main road. Biochemical features were not systematically collected and could not be included in the primary analysis. We were not able to ascertain whether HIV infected children and malnourished children attended and complied with treatments from comprehensive care and nutrition clinics after discharge from hospital. Moreover, this study did not include data on caregiver or household characteristics, socio-economic situation or access to care.

## Conclusion

This study highlights important differences in reasons for hospitalisation among school-aged children compared to younger children, and high rates of inpatient and post-discharge mortality among subgroups of school-aged children. To improve survival, active risk stratification and targeting intervention and follow-up in the early months after hospital discharge are needed, along with expansion of services that normally focus on the under-fives to vulnerable over-fives. The large proportion of deaths outside hospital suggests that facilitating access to healthcare among the most vulnerable and priority clinical evaluation if unwell may be important measures.

## Data availability

### Underlying data

Harvard Dataverse: Replication Data for: Inpatient and post-discharge mortality among children 5-12 years old in rural Kenya. <https://doi.org/10.7910/DVN/ZJOUWB37>.

The project contains the following underlying data:

- Over5years\_multipleadmissions.csv (contains clinical, anthropometric, CBC, blood & CSF culture at the time of hospital admission for children aged 5 to 12 years from 2007 to 2016, also provided in .dta format).

- over5years\_khdss.csv (contains vital status in the community following hospital discharge, also provided in .dta format).
- over5yearschemistry.csv (contains the biochemistry variables that were not systematically collected at admission. This file is used to run a sub-analysis of the chemistry factors associated with both inpatient and post-discharge mortality, also provided in .dta format).
- Data\_Dictionary\_NgariMM.pdf (contains a list of the variables of data collected at admission and discharge and their description).
- Discharge\_diagnosis codes.csv (contain the list of codes for discharge diagnosis).

## Extended data

Harvard Dataverse: Replication Data for: Inpatient and post-discharge mortality among children 5-12 years old in rural Kenya. <https://doi.org/10.7910/DVN/ZJOUWB37>.

This project contains the following extended data:

- Additional\_data\_Mngari et.al 2020.pdf (contains supplementary Tables S1–S5).
- Data\_Readme\_NgariMM.txt (dataset description and usage instructions).
- 5older years analysis\_v1.do (STATA script used to generate the summary participants characteristics at admission, reasons for admission to hospital and inpatient mortality including factors associated with inpatient deaths).
- post-discharge analysis\_over5years.do (STATA script that runs the post-discharge analysis. It merges the Over5years\_multipleadmissions.dta with the over5years\_khdss.dta, computes time under follow-up, post-discharge deaths, mortality rates and factors associated with post-discharge deaths).

## Reporting guidelines

Harvard Dataverse: STROBE checklist for “Replication Data for: Inpatient and post-discharge mortality among children 5-12 years old in rural Kenya”. <https://doi.org/10.7910/DVN/ZJOUWB37>.

Data are available under the terms of the [Creative Commons Attribution 4.0 International](https://creativecommons.org/licenses/by/4.0/) (CC BY 4.0)

## Acknowledgments

The authors wish to thank the Kilifi County Hospital patients, staff at the paediatric wards, the laboratory and KHDSS for their contributions to this study. This manuscript is published with permission from the Director of the Kenya Medical Research Institute (KEMRI).

## References

- United Nations Inter-agency Group for Child Mortality Estimation (UN IGME): Levels & Trends in Child Mortality: Report 2019, Estimates Developed by the United Nations Inter-Agency Group for Child Mortality Estimation. 2019. [Publisher Full Text](#)
- Hill K, Zimmerman L, Jamison DT: Mortality risks in children aged 5-14 years in low-income and middle-income countries: A systematic empirical analysis. *Lancet Glob Health*. 2015; 3(10): e609-16. [PubMed Abstract](#) | [Publisher Full Text](#)
- Hau DK, Chami N, Duncan A, et al.: Post-hospital mortality in children aged 2-12 years in Tanzania: A prospective cohort study. *PLoS One*. 2018; 13(8): e0202334. [PubMed Abstract](#) | [Publisher Full Text](#) | [Free Full Text](#)
- Masquelier B, Hug L, Sharrow D, et al.: Global, regional, and national mortality trends in older children and young adolescents (5-14 years) from 1990 to 2016: an analysis of empirical data. *Lancet Glob Health*. 2018; 6(10): e1087-e1099. [PubMed Abstract](#) | [Publisher Full Text](#) | [Free Full Text](#)
- Osano BO, Were F, Mathews S: Mortality among 5-17 year old children in Kenya. *Pan Afr Med J*. 2017; 27: 121. [PubMed Abstract](#) | [Publisher Full Text](#) | [Free Full Text](#)
- Morris SK, Bassani DG, Awasthi S, et al.: Diarrhea, pneumonia, and infectious disease mortality in children aged 5 to 14 years in India. *PLoS One*. 2011; 6(5): e20119. [PubMed Abstract](#) | [Publisher Full Text](#) | [Free Full Text](#)
- Nemetchek B, English L, Kissoon N, et al.: Paediatric postdischarge mortality in developing countries: A systematic review. *BMJ Open*. 2018; 8(12): e023445. [PubMed Abstract](#) | [Publisher Full Text](#) | [Free Full Text](#)
- Wiens MO, Pawluk S, Kissoon N, et al.: Paediatric Post-Discharge Mortality in Resource Poor Countries: A Systematic Review. *PLoS One*. 2013; 8(6): e66698. [PubMed Abstract](#) | [Publisher Full Text](#) | [Free Full Text](#)
- Winters BD, Eberlein M, Leung J, et al.: Long-term mortality and quality of life in sepsis: A systematic review. *Crit Care Med*. 2010; 38(5): 1276-83. [PubMed Abstract](#) | [Publisher Full Text](#)
- Stanton B, Clemens J, Khair T, et al.: Follow-up of children discharged from hospital after treatment for diarrhoea in urban Bangladesh. *Trop Geogr Med*. 1986; 38(2): 113-8. [PubMed Abstract](#)
- Moisi J, Gatakaa H, Berkley J, et al.: Excess child mortality after discharge from hospital in Kilifi, Kenya: a retrospective cohort analysis. *Bull World Health Organ*. 2011; 89(10): 725-32, 732A. [PubMed Abstract](#) | [Publisher Full Text](#) | [Free Full Text](#)
- Opoka RO, Hamre KES, Brand N, et al.: High postdischarge morbidity in Ugandan children with severe malarial anemia or cerebral malaria. *J Pediatric Infect Dis Soc*. 2017; 6(3): e41-e48. [PubMed Abstract](#) | [Publisher Full Text](#) | [Free Full Text](#)
- Olupot-Olupot P, Engoru C, Thompson J, et al.: Phase II trial of standard versus increased transfusion volume in Ugandan children with acute severe anemia. *BMC Med*. 2014; 12: 67. [PubMed Abstract](#) | [Publisher Full Text](#) | [Free Full Text](#)
- Madrid L, Casellas A, Saco C, et al.: Postdischarge mortality prediction in sub-Saharan Africa. *Pediatrics*. 2019; 143(1): e20180606. [PubMed Abstract](#) | [Publisher Full Text](#)
- Talbert A, Ngari M, Bauni E, et al.: Mortality after inpatient treatment for diarrhea in children: A cohort study. *BMC Med*. 2019; 17(1): 20. [PubMed Abstract](#) | [Publisher Full Text](#) | [Free Full Text](#)
- Chami N, Hau DK, Masoza TS, et al.: Very severe anemia and one year mortality outcome after hospitalization in Tanzanian children: A prospective cohort study. *PLoS One*. 2019; 14(6): e0214563. [PubMed Abstract](#) | [Publisher Full Text](#) | [Free Full Text](#)
- Scott JAG, Bauni E, Moisi JC, et al.: Profile: The Kilifi health and demographic surveillance system (KHDSS). *Int J Epidemiol*. 2012; 41(3): 650-7. [PubMed Abstract](#) | [Publisher Full Text](#) | [Free Full Text](#)
- Berkley JA, Lowe BS, Mwangi I, et al.: Bacteremia among children admitted to a rural hospital in Kenya. *N Engl J Med*. 2005; 352(1): 39-47. [PubMed Abstract](#) | [Publisher Full Text](#)
- World Health Organisation, WHO: Haemoglobin concentrations for the diagnosis of anaemia and assessment of severity. *Geneva, Switz World Heal Organ*. 2011. [Reference Source](#)
- Mramba L, Ngari M, Mwangome M, et al.: A growth reference for mid upper arm circumference for age among school age children and adolescents, and validation for mortality: Growth curve construction and longitudinal cohort study. *BMJ*. 2017; 358: j3423. [PubMed Abstract](#) | [Publisher Full Text](#) | [Free Full Text](#)
- De Onis M, Onyango AW, Borghi E, et al.: Development of a WHO growth reference for school-aged children and adolescents. *Bull World Health Organ*. 2007; 58(9): 660-7. [PubMed Abstract](#) | [Publisher Full Text](#) | [Free Full Text](#)
- Mwangome MK, Fegan G, Prentice AM, et al.: Are diagnostic criteria for acute malnutrition affected by hydration status in hospitalized children? A repeated measures study. *Nutr J*. 2011; 10: 92. [PubMed Abstract](#) | [Publisher Full Text](#) | [Free Full Text](#)
- Steyerberg EW, Harrell FE, Borsboom GJJM, et al.: Internal validation of predictive models: Efficiency of some procedures for logistic regression analysis. *J Clin Epidemiol*. 2001; 54(8): 774-81. [PubMed Abstract](#) | [Publisher Full Text](#)
- Gathara D, Malla L, Ayieko P, et al.: Variation in and risk factors for paediatric inpatient all-cause mortality in a low income setting: Data from an emerging clinical information network. *BMC Pediatr*. 2017; 17(1): 99. [PubMed Abstract](#) | [Publisher Full Text](#) | [Free Full Text](#)
- Ayieko P, Ogero M, Makone B, et al.: Characteristics of admissions and variations in the use of basic investigations, treatments and outcomes in Kenyan hospitals within a new Clinical Information Network. *Arch Dis Child*. 2016; 101(3): 223-9. [PubMed Abstract](#) | [Publisher Full Text](#) | [Free Full Text](#)
- Chopra M, Stirling S, Wilkinson D, et al.: Paediatric admissions to a rural South African hospital: Value of hospital data in helping to define intervention priorities and allocate district resources. *S Afr Med J*. 1998; 88(6 Suppl): 785-8. [PubMed Abstract](#)
- Ngari MM, Fegan G, Mwangome MK, et al.: Mortality after Inpatient Treatment for Severe Pneumonia in Children: a Cohort Study. *Paediatr Perinat Epidemiol*. 2017; 31(3): 233-242. [PubMed Abstract](#) | [Publisher Full Text](#) | [Free Full Text](#)
- Chhibber AV, Hill PC, Jafali J, et al.: Child mortality after discharge from a health facility following suspected pneumonia, meningitis or septicaemia in rural Gambia: A cohort study. *PLoS One*. 2015; 10(9): e0137095. [PubMed Abstract](#) | [Publisher Full Text](#) | [Free Full Text](#)
- Scott SP, Chen-Edinboro LP, Caulfield LE, et al.: The impact of anemia on child mortality: An updated review. *Nutrients*. 2014; 6(12): 5915-32. [PubMed Abstract](#) | [Publisher Full Text](#) | [Free Full Text](#)
- Maitland K, Kiguli S, Olupot-Olupot P, et al.: Immediate transfusion in African children with uncomplicated severe anemia. *N Engl J Med*. 2019; 381(5): 407-419. [PubMed Abstract](#) | [Publisher Full Text](#)
- Maitland K, Olupot-Olupot P, Kiguli S, et al.: Transfusion volume for children with severe anemia in Africa. *N Engl J Med*. 2019; 381(5): 420-431. [PubMed Abstract](#) | [Publisher Full Text](#)
- Brabin BJ, Premji Z, Verhoeff F: An analysis of anemia and child mortality. In: *Journal of Nutrition*. 2001. [PubMed Abstract](#) | [Publisher Full Text](#)
- Chami N, Kabyemera R, Masoza T, et al.: Prevalence and factors associated with renal dysfunction in children admitted to two hospitals in northwestern Tanzania. *BMC Nephrol*. 2019; 20(1): 79. [PubMed Abstract](#) | [Publisher Full Text](#) | [Free Full Text](#)
- McWilliam SJ, Antoine DJ, Smyth RL, et al.: Aminoglycoside-induced nephrotoxicity in children. *Pediatr Nephrol*. 2017; 32(11): 2015-2025. [PubMed Abstract](#) | [Publisher Full Text](#) | [Free Full Text](#)
- Berkley JA, Ngari M, Thitiri J, et al.: Daily co-trimoxazole prophylaxis to prevent mortality in children with complicated severe acute malnutrition: A multicentre, double-blind, randomised placebo-controlled trial. *Lancet Glob Health*. 2016; 4(7): e464-73. [PubMed Abstract](#) | [Publisher Full Text](#) | [Free Full Text](#)
- Maitland K, Olupot-Olupot P, Kiguli S, et al.: Co-trimoxazole or multivitamin multimineral supplement for post-discharge outcomes after severe anaemia in African children: a randomised controlled trial. *Lancet Glob Health*. 2019; 7(10): e1435-e1447. [PubMed Abstract](#) | [Publisher Full Text](#) | [Free Full Text](#)
- Ngari MM, Murunga S, Otiende M, et al.: Replication Data for: Inpatient and post-discharge mortality among children 5-12 years old in rural Kenya. Harvard Dataverse, V1. Published. 2020. <http://www.doi.org/10.7910/DVN/ZJOUWB>

# Open Peer Review

Current Peer Review Status: ? ✓ ✓

## Version 1

Reviewer Report 10 November 2020

<https://doi.org/10.21956/wellcomeopenres.17944.r40989>

© 2020 Wiens M. This is an open access peer review report distributed under the terms of the [Creative Commons Attribution License](#), which permits unrestricted use, distribution, and reproduction in any medium, provided the original work is properly cited.



**Matthew Wiens** 

University of British Columbia, Vancouver, Canada

This is another excellent study by the Kilifi team and their colleagues which further highlights the importance of pediatric post-discharge mortality in resource limited settings, this time among a new population of children that has to date been largely neglected - school age children. I applaud this group for this new focus and believe that as evidence such as this continues to accumulate, that policy makers and others involved in the development and implementation of guidelines and recommendations, will increasingly see the provision of improved discharge and post-discharge care as a major priority to further improve child health outcomes.

This study is well justified and the reasons are well outlined in the introduction. The methodology follows a similar strategy as other previously published work by this team and is clear and concisely recorded.

Methods:

The methodology follows a similar strategy as other previously published work by this team and is clear and concisely recorded. Given that this study is retrospective in nature, and utilized data routinely collected by health workers during routine care, some mention of data quality should be considered, both in terms of standardized training, as well as quality assessment.

In terms of missing data, I see some minor statements at the bottom of Table 1, but this does not comprehensively state missingness in its totality. Would it perhaps be better to have another column in this table outlining the % missing for each for the variables of potential interest? For example, how many were missing "clinical features", how many were missing temp, how many were missing a diagnosis, etc. I recognize that some variables are defined by their presence (lethargy, decreased skin turgor, etc.), thus missingness is impossible to determine, but for those that are not subject to this issue, a report of missingness will give the readers an overall picture of the quality of the data from which these analyses are conducted. I do note that nearly 1 in 4 are missing WAZ, which does seem quite high.

For children who were below 155 months, but would be older than 155 months prior to the

completion of 12 month follow-up, did these children remain in the cohort beyond the 155 month upper age limit? If yes, did the KHDSS properly capture outcomes among these older children?

Results:

The results are adequately presented given the analyses conducted. Perhaps more details could be presented on missingness in the tables.

Did the authors examine discharge disposition as an associated factor with death (i.e. discharge against medical advice).

I note that the authors mention that 45% of deaths did not occur during readmission to KCH, but does this also mean that they died outside of ANY health facility?

For those that died during a readmission, can these causes of death be briefly described?

Was any comparative exploration done on early vs late post-discharge deaths?

Was any exploration on readmissions in general done?

Discussion

The discussion touches on the main points needed for this topical area of research. I have no further comments.

**Is the work clearly and accurately presented and does it cite the current literature?**

Yes

**Is the study design appropriate and is the work technically sound?**

Yes

**Are sufficient details of methods and analysis provided to allow replication by others?**

Yes

**If applicable, is the statistical analysis and its interpretation appropriate?**

Yes

**Are all the source data underlying the results available to ensure full reproducibility?**

Yes

**Are the conclusions drawn adequately supported by the results?**

Yes

**Competing Interests:** No competing interests were disclosed.

**Reviewer Expertise:** Post-discharge outcomes research, Epidemiology, Prediction modelling.

**I confirm that I have read this submission and believe that I have an appropriate level of expertise to confirm that it is of an acceptable scientific standard.**



Reviewer Report 06 November 2020

<https://doi.org/10.21956/wellcomeopenres.17944.r41033>

© 2020 Hau D. This is an open access peer review report distributed under the terms of the [Creative Commons Attribution License](#), which permits unrestricted use, distribution, and reproduction in any medium, provided the original work is properly cited.



**Duncan Hau** 

Weill Cornell Medical College, New York, NY, USA

This large retrospective cohort study is of children 5-12 years of age admitted to a hospital. The authors evaluated causes of admissions and mortality of in-hospital/post-hospital up to 1 year. This study adds valuable information to the current research on post-discharge mortality, particularly for children over five years. The strengths of this study are the large participates and high follow-up rate. The authors have done a very good job presenting the data in a clear and concise form. I recommend this manuscript for indexing with a few minor revisions listed below.

#### Introduction:

- The authors do a thorough review of the current literature on post-hospital mortality and state the problem well.
- In Paragraph #3, the authors mention since the last review (2018), four more studies have evaluated pediatric post-discharge mortality. Reference 3 and 16 look to be from the same study subjects in Tanzania. Ref 16 evaluated the subjects based on level of hemoglobin compared to ref 3 that evaluated on diagnoses. Might want to clarify this in the text.
- Aim of study is clear. I would recommend mentioning what type of study in the last paragraph (i.e.: retrospective cohort study).

#### Methods:

- Methods are well written with clear study design and statistical analysis used.
- The authors mention the use of KHDSS for post-hospital period to confirm vital status post-discharge. It would be good to mention briefly how families are contacted by the KHDSS, and if children die outside the health care system (i.e.: at home), was there a way to determine cause of death?

#### Results:

- The results are clearly presented in text and tables/figures.
- It is interesting to note the in-patient deaths vary considerably by diagnosis (i.e.: severe pna, bacteremia, meningitis have mortality 13-17% vs. severe anaemia and malaria 4-5%). Do you know the causes of death for the post-hospital children?
- Table 3: It is interesting that epilepsy/convulsions was found to be protective for inpatient mortality. Any thoughts to elaborate this finding in the discussion?
- Post-hospital mortality 3.0% with majority of deaths (71%) within the first 3 months indicate

this is a critical period for children.

- It is interesting to note that some signs at admission you found in your study (i.e.: elevated RR, weak pulse) were associated with post-discharge death. These were also variables that were associated with in-patient death. The assumption that children are discharged from the hospital with stable vital signs (normal RR and normal pulse strength) would make me think these variables (unstable vital signs or concerning physical examination findings) would only be factors for in-patient mortality. I think in resource limited settings, some children are perhaps discharged with unstable vital signs which can lead to death post-discharge.
- The authors mentioned 45% deaths occurred without readmission to KCH. Could these children have been admitted to another health care facility in the area? I don't think we can assume they died "outside hospital" unless that was verified. This would lead back to explaining in the methods section how families were contacted post-discharge and what questions were asked.
- Do you know causes of death for the post-hospital mortality? If yes, it would be nice to know and if these differ from the admission diagnosis. For example, a child admitted for malaria was discharged and then died post-hospital due to another cause.

Discussion:

- In paragraph #6 about exploratory analyses, the authors mention ref #3 for a study that identified GFR. The authors wrote "2 to 15 years", but it appears that study evaluated 2-12 year olds. This should be corrected in the text.
- In paragraph #7 when you state "our findings add to previous data in under-fives suggesting..", shouldn't it be "over-five" since your study is on school aged children?

**Is the work clearly and accurately presented and does it cite the current literature?**

Yes

**Is the study design appropriate and is the work technically sound?**

Yes

**Are sufficient details of methods and analysis provided to allow replication by others?**

Yes

**If applicable, is the statistical analysis and its interpretation appropriate?**

Yes

**Are all the source data underlying the results available to ensure full reproducibility?**

Yes

**Are the conclusions drawn adequately supported by the results?**

Yes

**Competing Interests:** No competing interests were disclosed.

**Reviewer Expertise:** Pediatric Hospital Outcomes Research.

**I confirm that I have read this submission and believe that I have an appropriate level of expertise to confirm that it is of an acceptable scientific standard.**

Reviewer Report 23 October 2020

<https://doi.org/10.21956/wellcomeopenres.17944.r40793>

© 2020 Masquelier B. This is an open access peer review report distributed under the terms of the [Creative Commons Attribution License](#), which permits unrestricted use, distribution, and reproduction in any medium, provided the original work is properly cited.



**Bruno Masquelier** 

Demography Research Center, Catholic University of Louvain, Leuven, Belgium

This article provides detailed and very useful information for the prevention of deaths in school-age children, showing that the experience of a hospital stay is an important marker of excess mortality in the future. I only have minor comments.

- The authors report that 3% of children died within one year period. But what is the baseline mortality rate in this age group in the Kilifi HDSS?
- The study is located within the KHDSS site. It would be nice to add some background information in the intro or discussion about the causes of death in children aged 5-12 from the verbal autopsies to compare with causes of post-discharge deaths reported in the study.
- In the methods section, it is said that details of subsequent clinic attendance were not recorded on the database. This is a bit confusing as on page 4, the authors acknowledge that children may be admitted multiple times and each child could contribute more than one admission. Can you clarify? Are you referring to the lack of data on subsequent clinic attendance when children are admitted in other hospitals (possibly outside the HDSS) after being discharged from KCH?
- One important result is that 45% of deaths occurred without readmission to KCH. Among these, some children could have been admitted in other hospitals or in health facilities (and die before being referred to KCH). Based on info from the HDSS (e.g. verbal autopsies), is it possible to know the share of deaths that occurred outside of health facilities?
- Can you add more details about how the patient data are linked to the HDSS database? Is this record linkage deterministic based on some kind of ID number or performed on-site through searches in the HDSS database?
- The abstract states that reasons for admissions were markedly different from those reported in under-fives, but what are these? These are only mentioned very quickly in the discussion, with only two reasons (pneumonia and diarrhoea). More details should be provided on these, ideally from KCH.

- Second paragraph of the main text, "children may be admitted", please specify in the hospital or/health facilities.
- Page 3, "5 to 12" instead of '5 to12'.
- In Table 1, I don't understand why 29% of children of the sample of 3907 children were admitted prior to age 5 years as these 3907 admissions are supposed to be of children aged 5-12 years (from the description of the sample in the Results section). Can you clarify?
- In Figure 2, can you add confidence intervals around the cumulative hazard curves?

**Is the work clearly and accurately presented and does it cite the current literature?**

Yes

**Is the study design appropriate and is the work technically sound?**

Yes

**Are sufficient details of methods and analysis provided to allow replication by others?**

Yes

**If applicable, is the statistical analysis and its interpretation appropriate?**

Yes

**Are all the source data underlying the results available to ensure full reproducibility?**

Yes

**Are the conclusions drawn adequately supported by the results?**

Partly

**Competing Interests:** No competing interests were disclosed.

**Reviewer Expertise:** Demography.

**I confirm that I have read this submission and believe that I have an appropriate level of expertise to confirm that it is of an acceptable scientific standard, however I have significant reservations, as outlined above.**

---