

*Figure 1: Uterus over the placental bed appears abnormal (note the bluish/purple appearance) with obvious distension of the lower segment (a 'placental bulge')*

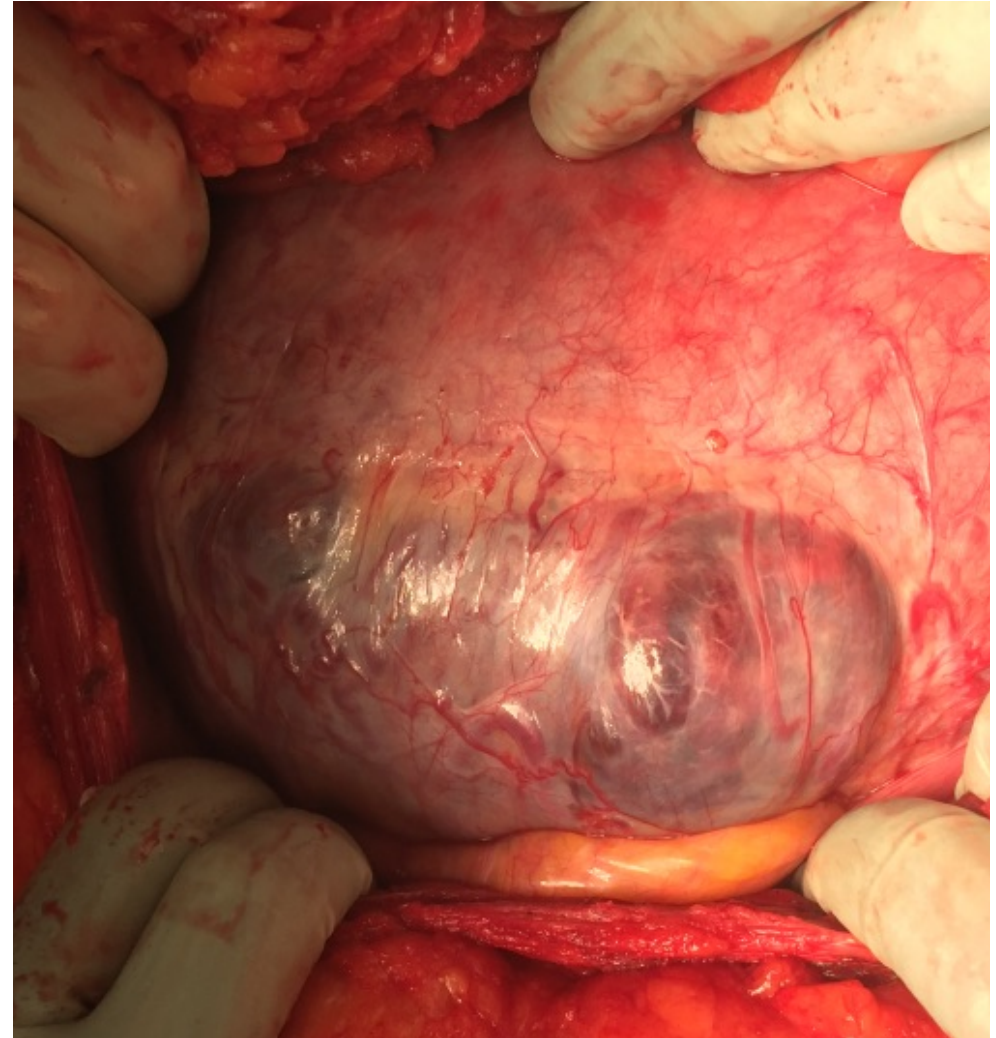
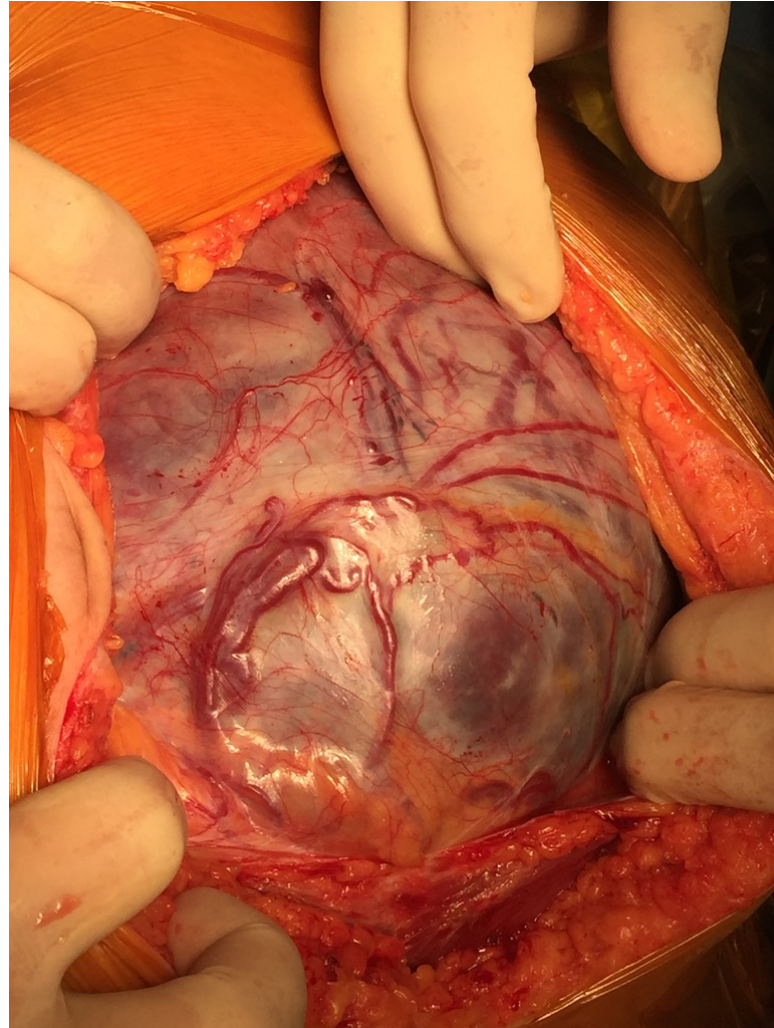


Figure 2: Placental tissue seen to have invaded through to the surface of the uterus. This may or may not have penetrated the serosa.

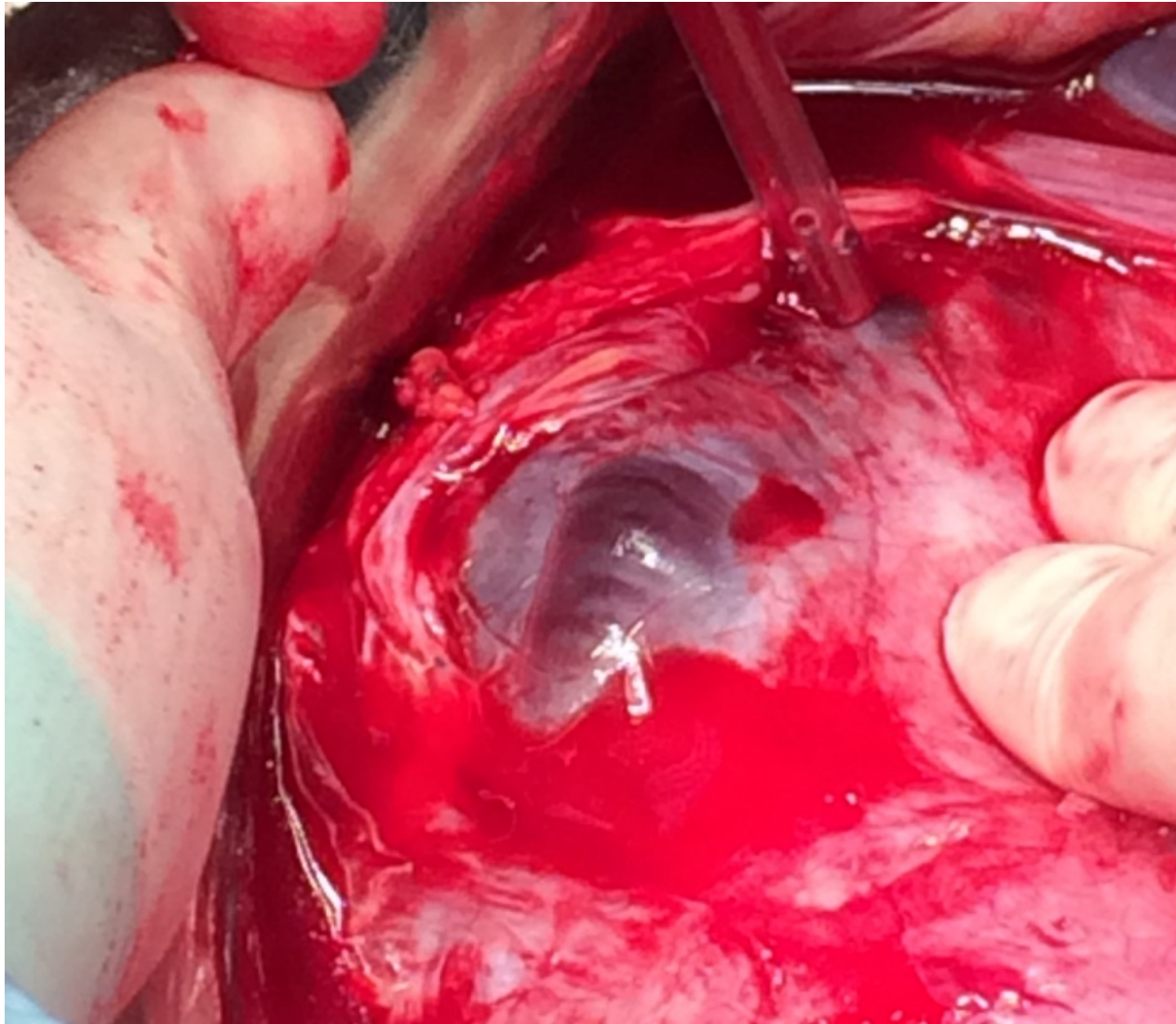


Figure 3: A 'uterine window' which is a uterine scar dehiscence with the placenta visible directly underneath it. NB the surrounding uterine tissue appears normal and there is no abnormal neovascularity.

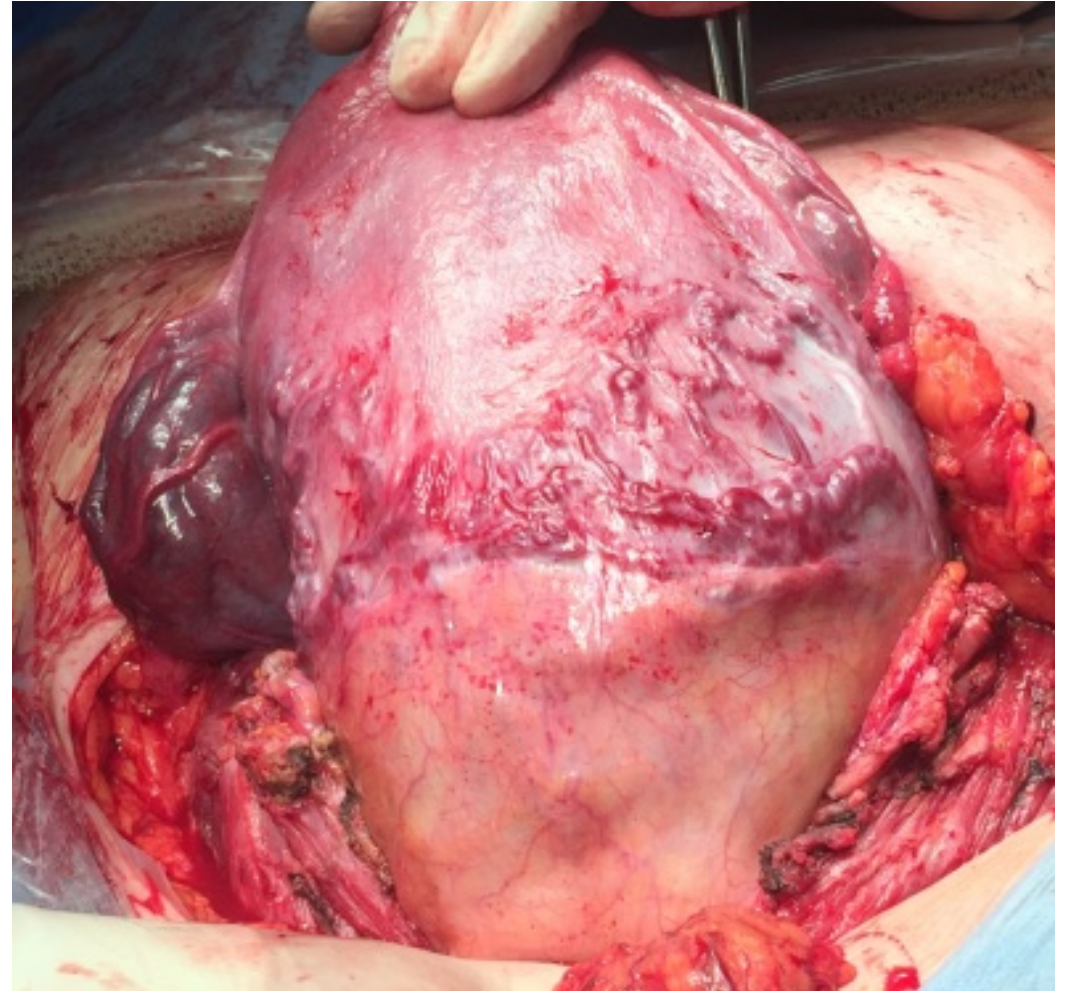
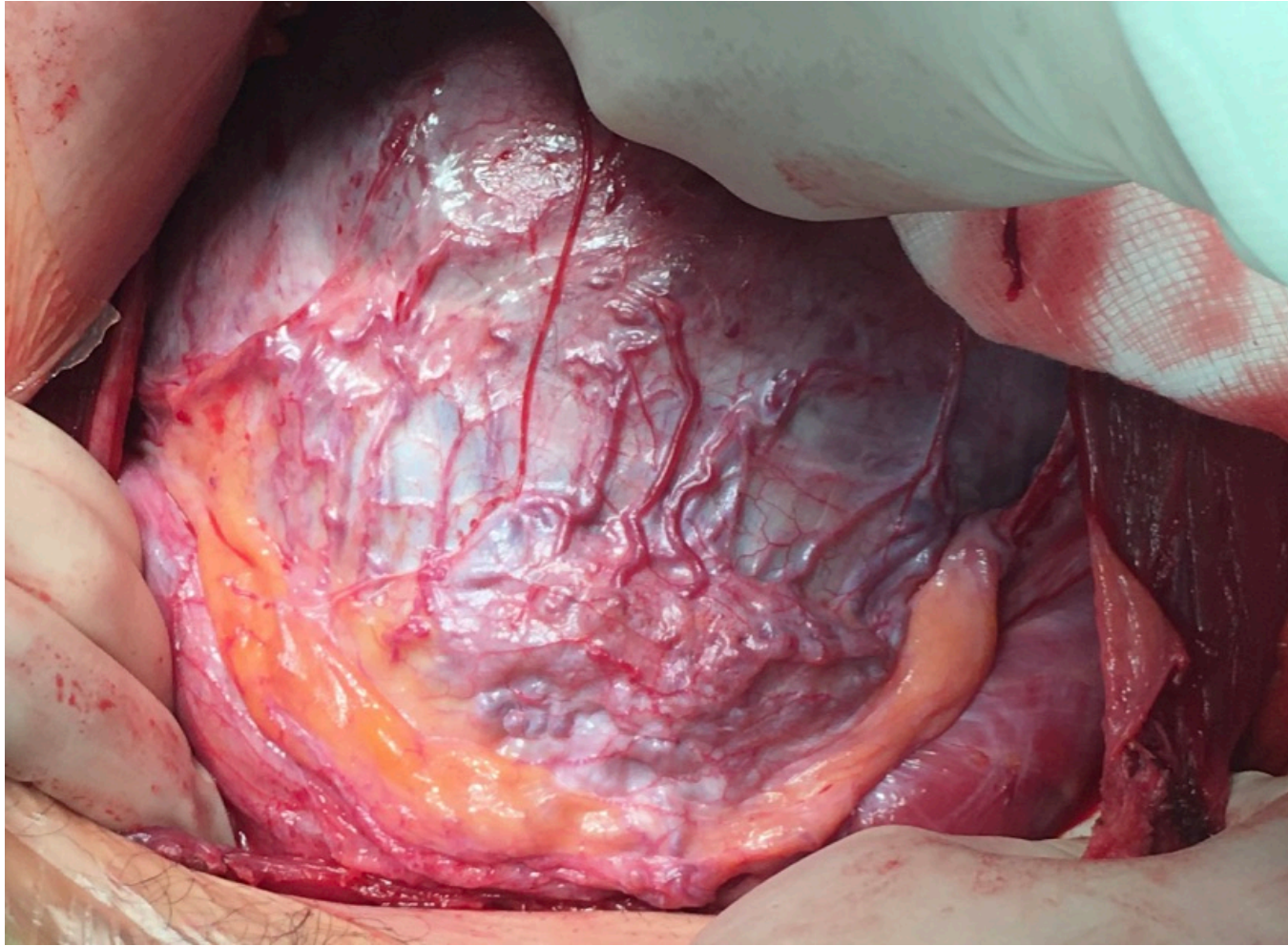


Figure 4: Excessive, abnormal neo-vascularity in the lower segment (note the vessels running cranio-caudally).